

TECHNICAL MANUAL

**ORGANIZATIONAL, DIRECT SUPPORT, AND GENERAL
SUPPORT MAINTENANCE REPAIR PARTS AND
SPECIAL TOOLS LIST**

FOR

**INSTALLATION KIT, MK-1818/GSG-10(V)
(NSN 1290-01-070-8908)**

Technical Manual }
 TM 11-7440-293-24P }

HEADQUARTERS
 DEPARTMENT OF THE ARMY
 Washington, DC, 10 September 1985

**ORGANIZATIONAL, DIRECT SUPPORT AND GENERAL SUPPORT
 MAINTENANCE REPAIR PARTS AND SPECIAL TOOL LIST
 FOR**

**INSTALLATION KIT, MK-1818/GSG-10(V)
 (NSN 1290-01-070-8908)**

Current as of 17 April 1985

REPORTING ERRORS AND RECOMMENDING IMPROVEMENTS

You can help improve this manual. If you find any mistakes or if you know of a way to improve the procedures, please let us know. Mail your letter, DA Form 2028 (Recommended Changes to Publications and Blank Forms) or DA Form 2028-2 located in the back of this manual direct to: Commander, US Army Communications-Electronics Command and Fort Monmouth, ATTN: AMSEL-ME-MP, Fort Monmouth, New Jersey 07703-5007. A reply will be furnished direct to you.

TABLE OF CONTENTS

| | Page | Ill us Figure |
|--|------|------------------|
| Section I. Introduction | 1 | |
| II. Repair Parts List | 5 | |
| Group 00 Installation Kit, Electronics Equipment MK-1818/GSG-10(V) | 5 | 1 |
| Installation Kit, Rack Assemblies MK-1818/GSG-10(V) | 11 | 2 |
| 01 Radio Mount | 13 | 3 |
| 02 Table Mount | 15 | 4 |
| 03 Key Generator Rack | 17 | 5 |
| 04 Message Entry Group Rack | 19 | 6 |
| 05 Electronic Line Printer Rack | 21 | 7 |
| 06 Wall Support (No parts authorized) | | |
| 07 Electronic Line Printer (See TM 11-7440-242-23P for parts) | | |
| 08 Message Entry Group (See TM 11-7440-242-23P for parts) | | |
| 09 Key Generator (See KAM-240B/TSEC Vol 1. for parts) | | |
| 10 Radio Receiver Transmitters (See TM 11-7440-242-23P for parts) | | |
| 11 DC/DC Switch | 23 | 8 |
| 12 Antenna Assemblies (See TM 11-5985-262-24P for parts) | | |
| 13 Power Supply (See TM 11-6130-246-24P for parts) | | |
| 14 Cable Assembly (No parts authorized) | | |
| 15 MK-1783/GSC-21 (See TM 11-7440-242-23P for parts) | | |
| Section III. Special Tools List (Not applicable) | | |
| IV. National Stock Number and Part Number Index | 24 | |

SECTION I

INTRODUCTION

1. Scope

This manual lists spares and repair parts; special tools; special test, measurement, and diagnostic equipment (TMDE), and other special support equipment required for performance of organizational, direct support and general support maintenance of the MK-1818/GSG-10(V). It authorizes the requisitioning and issue of spares and repair parts as indicated by the source and maintenance codes.

2. General

This Repair Parts and Special Tools List is divided into the following sections:

a. Section //. *Repair Parts List.* A list of spares and repair parts authorized for use in the performance of maintenance. The list also includes parts which must be removed for replacement of the authorized parts. Parts lists are composed of functional groups in numeric sequence, with the parts in each group listed in figure and item number sequence.

b. Section ///. *Special Tools List.* Not applicable.

c. Section IV. *National Stock Number and Part Number Index.* A list, in National item identification number (NIIN) sequence, of all National stock numbers (NSN) appearing in the listings, followed by a list, in alphameric sequence, of all part numbers appearing in the listings. National stock numbers and part numbers are cross-referenced to each illustration figure and item number appearance.

3. Explanation of Columns

a. Illustration. This column is divided as follows:

(1) *Figure number.* Indicates the figure number of the illustration on which the item is shown.

(2) *Item number.* The number used to identify item called out in the illustration.

b. Source, Maintenance, and Recoverability (SMR) Codes.

(1) *Source code.* Source codes indicate the manner of acquiring support items for maintenance, repair, or overhaul of end items. Source codes are entered in the first and second positions of the Uniform SMR Code format as follows:

| <i>Code</i> | <i>Definition</i> |
|-------------|--|
| PA | —Item procured and stocked for anticipated or known usage. |
| PD | —Support item, excluding support equipment, procured for initial issue or outfitting and stocked only for subsequent or additional initial issue or outfittings. Not subject to automatic replenishment. |
| XB | —Item is not procured or stocked. If not available through salvage, requisition. |

NOTE

Cannibalization or salvage may be used as a source of supply for any items source coded above except those coded XA and aircraft support items as restricted by AR 750-1.

(2) *Maintenance code.* Maintenance codes are assigned to indicate the levels of maintenance authorized to USE and REPAIR support items. The maintenance codes are entered in the third and fourth positions of the Uniform SMR Code format as follows:

(a) The maintenance code entered in the third position will indicate the lowest maintenance level authorized to remove, replace, and use the support item. The maintenance code entered in the third position will indicate one of the following levels of maintenance:

Code Application/Explanation

- O — Support item is removed, replaced, used at the organizational level.
- F — Support item is removed, replaced, used at the direct support level.

(b) The maintenance code entered in the fourth position indicates whether the item is to be repaired and identifies the lowest maintenance level with the capability to perform complete repair (i.e., all authorized maintenance functions). This position will contain one of the following maintenance codes:

Code Application/Explanation

- F — The lowest maintenance level capable of complete repair of the support item is the direct support level.
- H — The lowest maintenance level capable of complete repair of the support item is the general support level.
- D — The lowest maintenance level capable of complete repair of the support item is the depot level.
- z — Nonreparable. No repair is authorized.

(3) *Recoverability code.* Recoverability codes are assigned to support items to indicate the disposition action on unserviceable items. The recoverability code is entered in the fifth position of the Uniform SMR Code format as follows:

Recoverability Code Definition

- Z — Nonreparable item. When unserviceable, condemn and dispose at the level indicated in position 3.
- F — Repairable item. When uneconomically repairable, condemn and dispose at the direct support level.
- H — Repairable item. When uneconomically repairable, condemn and dispose at the general support level.
- D — Repairable item. When beyond lower level repair capability, return to depot. Condemnation and disposal not authorized below depot level.

c. National Stock Number. Indicates the National stock number assigned to the item and will be used for requisitioning purposes.

d. Federal Supply Code for Manufacturer (FSCM). The FSCM is a 5-digit numeric code listed in SB 708-41/42 which is used to identify the manufacturer, distributor, or Government agency, etc.

e. Part Number. Indicates the primary number used by the manufacturer (individual, company, firm, corporation, or Government activity), which controls the design and characteristics of the item by means of its engineering drawings, specifications, standards, and inspection requirements to identify an item or range of items.

NOTE

When a stock numbered item is requisitioned, the repair part received may have a different part number than the part being replaced.

f. Description. Indicates the Federal item name and, if required, a minimum description to identify the item. Items that are included in kits and sets are listed below the name of the kit or set indicated in the quality incorporated in unit column.

g. Unit of Measure (U/M). Indicates the standard of the basic quantity of the listed item as used in performing the actual maintenance function. This measure is expressed by a two-character alphabetical abbreviation (e.g., ea, in, pr, etc). When the unit of measure differs from the unit of issue, the lowest unit of issue that will satisfy the required units of measure will be requisitioned.

h. Quantity Incorporated in Unit. Indicates the quantity of the item used in the breakout shown on the illustration figure, which is prepared for a functional group, subfunctional group, or an assembly.

4. Special Information

a. The following publications pertain to the MK-1818/GSG-10(V) and its components:

- KAM-240B/TSEC Vol. 1
- TM 11-5820-401-12, Radio Sets, AN/VRC-12, AN/VRC-13, AN/VRC-44, AN/VRC-45, AN/VRC-46, AN/VRC-47, AN/VRC-48, AN/VRC-49, AN/VRC-54; Mounting Kit

MT-1029/VRC and MT-1898/VRC; Antenna Kit, AT-912/VRC; Control, Frequency Selector, C-2742NRC and Control, Radio Set, C-2299/VRC.

TM 11-5985-262-24P, Antenna, AS-1729/VRC

TM 11-6130-246-24P, Power Supply, PP-1104C/G

TM 11-7440-242-23P, Fire Direction System Artillery AN/GSG-10(V) including Fire Direction Center, Artillery, OA-8390/GSG-10(V) (Div); Fire Direction Center, Artillery Processing and Display, OA-8389/GSG-10(V) (Battalion); Message Entry Device, Variable Format, AN/GSC-21 (VFMED) and Data Display, Artillery, Battery, AN/GSQ-122 (BDU).

TM 11-7440-253-10-1, Message Entry Device Variable Format AN/GSC-21 (VFMED)

b. National stock numbers (NSN's) that are missing from P source coded items have been applied for and will be added to this TM by future change/revision when they are entered in the Army Master Data File (AMDF). Until the NSN's are established and published, submit exception requisitions to: Commander, US Army Communications-Electronics Command and Fort Monmouth, ATTN: AMSEL-MM, Fort Monmouth, NJ 07703-5006 for the part required to support your equipment.

5. How to Locate Repair Parts

a. When National stock number or part number is unknown.

(1) *First.* Using the table of contents, determine the functional group within which the item belongs. This is necessary since Illustrations are prepared for functional groups and listings and divided into the same groups.

(2) *Second.* Find the illustration covering the functional group to which the item belongs.

(3) *Third.* Identify the item on the illustration and note the illustration figure and item number of the item.

(4) *Fourth.* Using the Repair Parts Listing, find the figure and item number noted on the illustration.

b. When National stock number or part number is known.

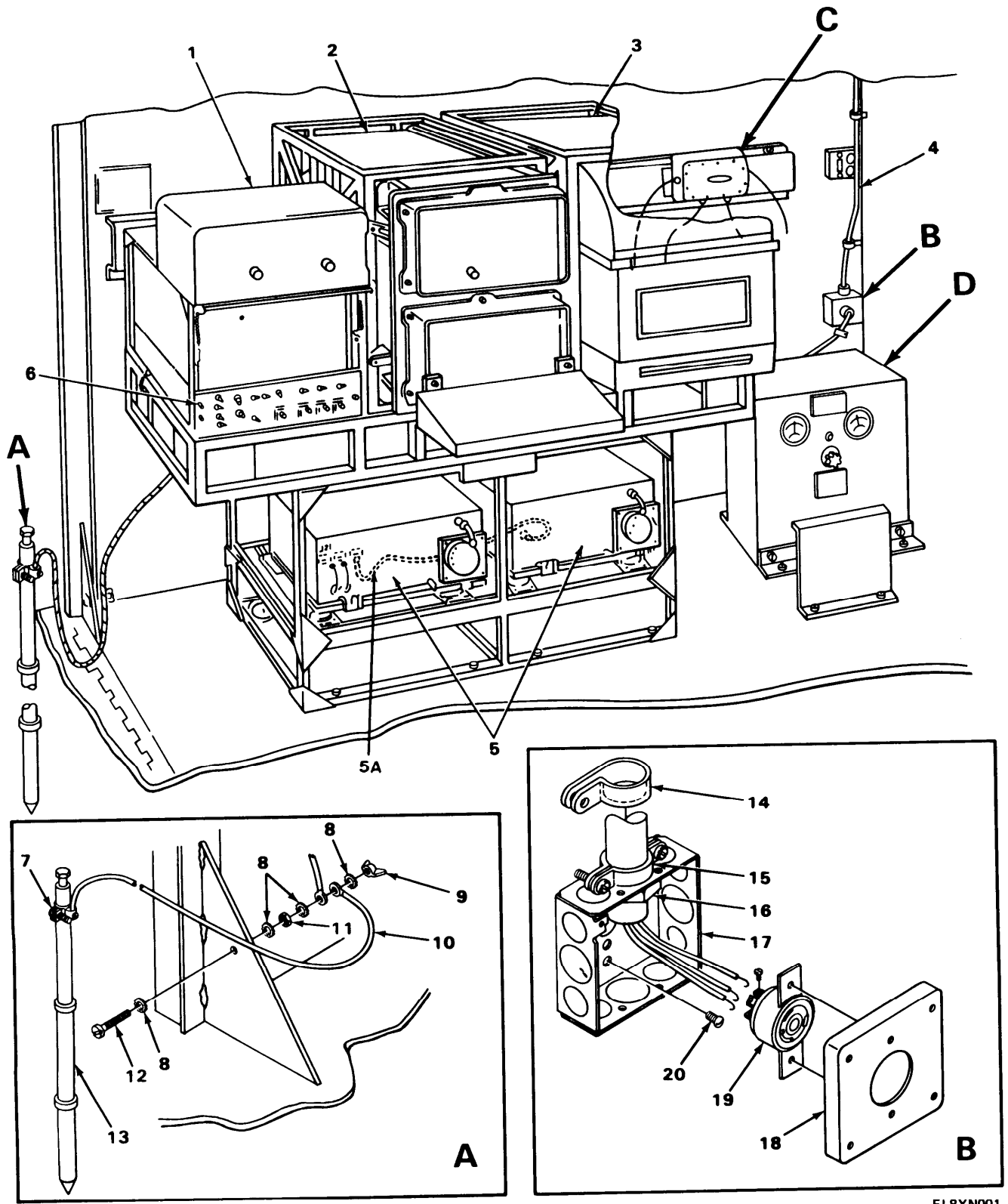
(1) *First.* Using the Index of National Stock Numbers and Part Numbers, find the pertinent National stock number or part number. This index is in NIIN sequence followed by a list of part numbers in alphameric sequence, cross-referenced to the illustration figure number and item number.

(2) *Second.* After finding the figure and item number, locate the figure and item number in the repair parts list.

6. Abbreviations

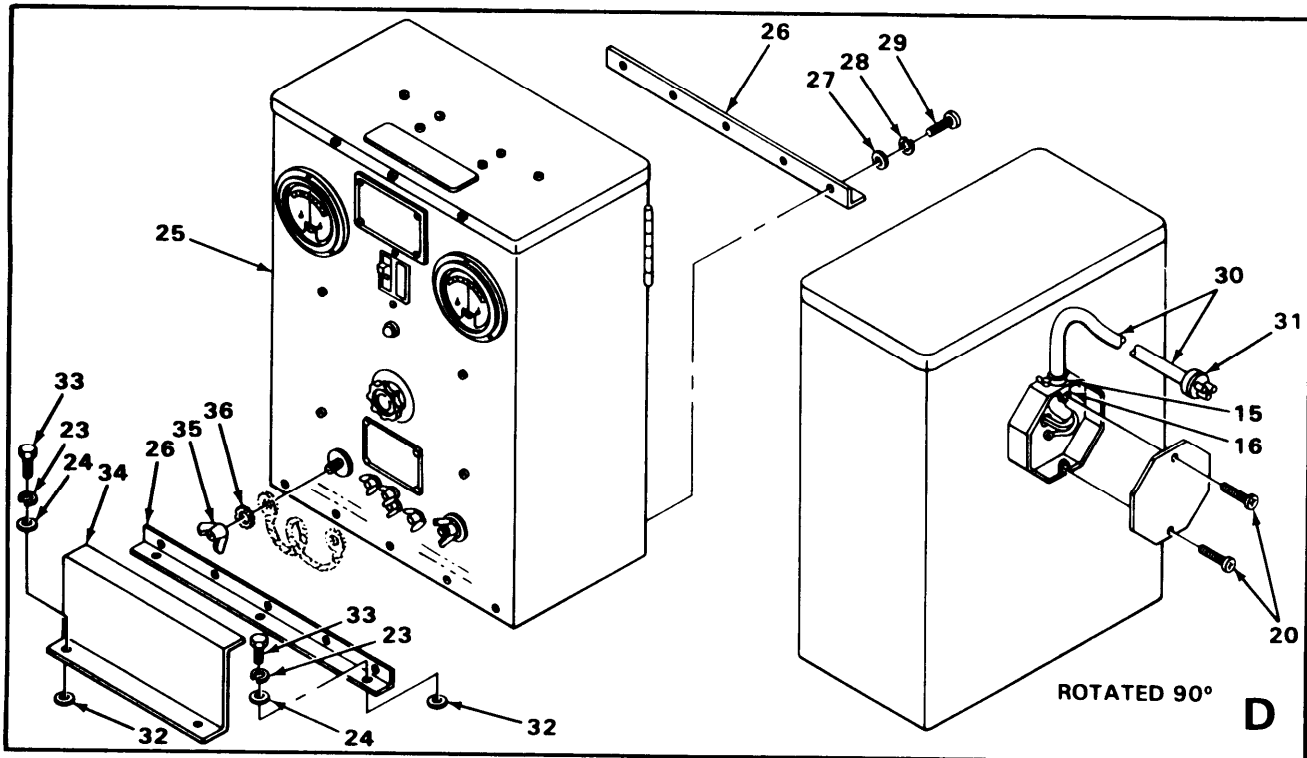
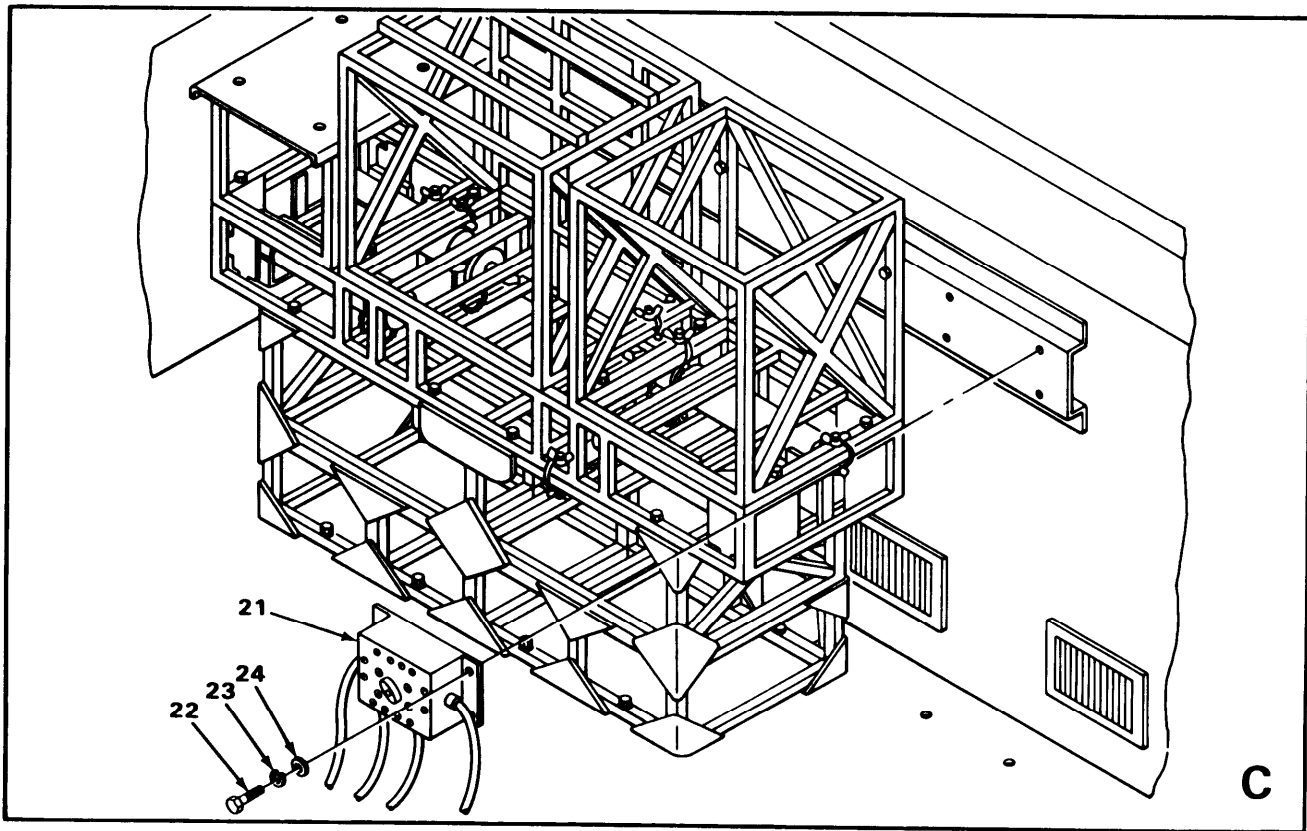
Not applicable.

(Next printed page is 4.1)



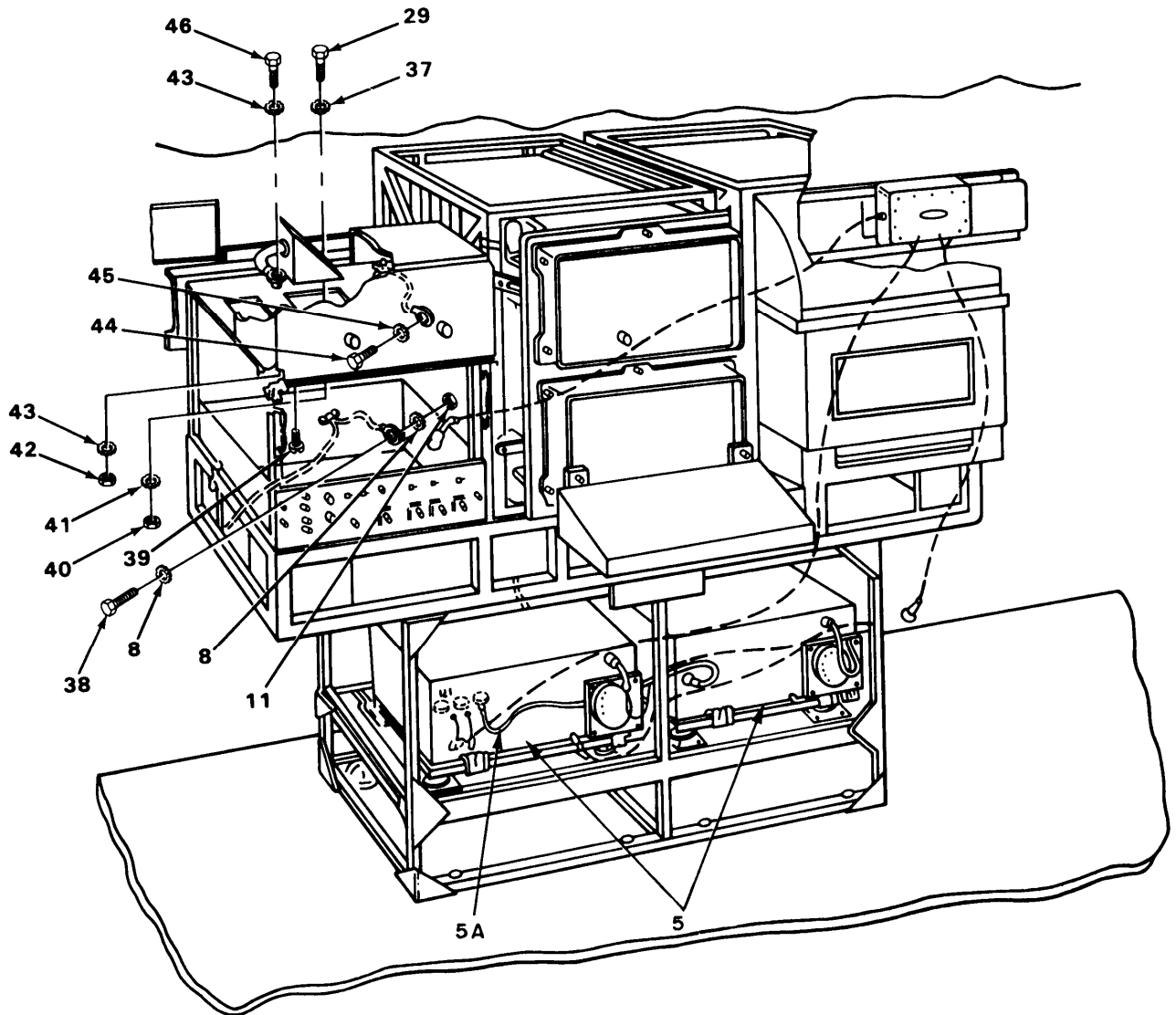
EL8XN001

Figure 1. Installation Kit MK-1818/GSG-10(V), Electronics Equipment (Sheet 1 of 4).



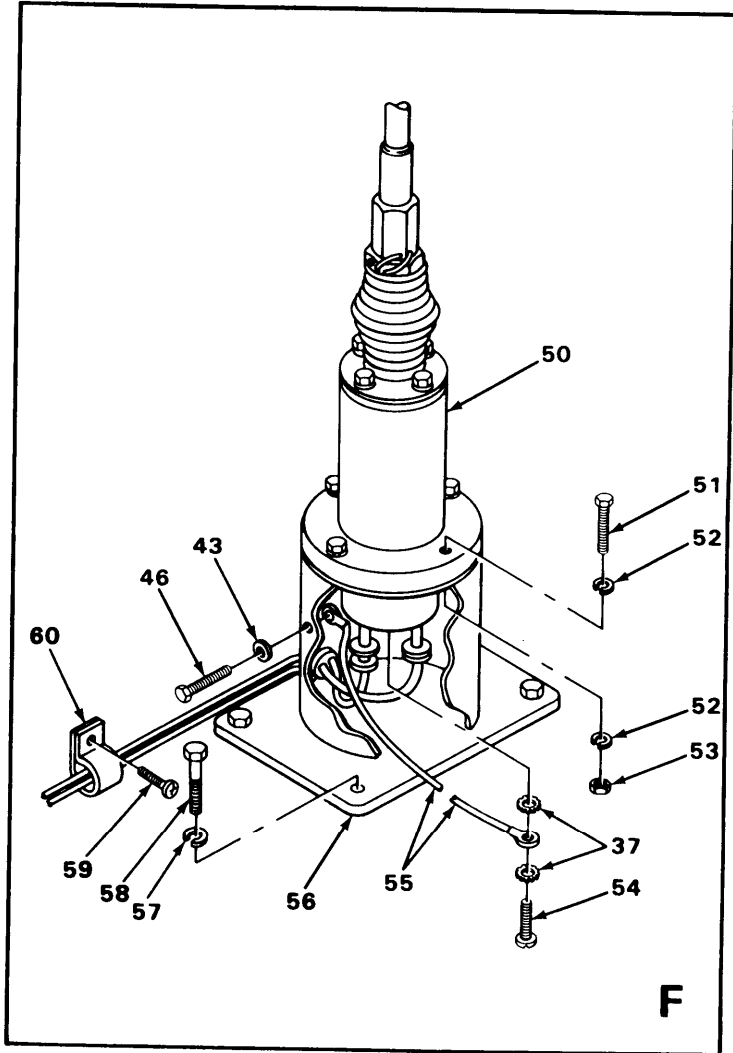
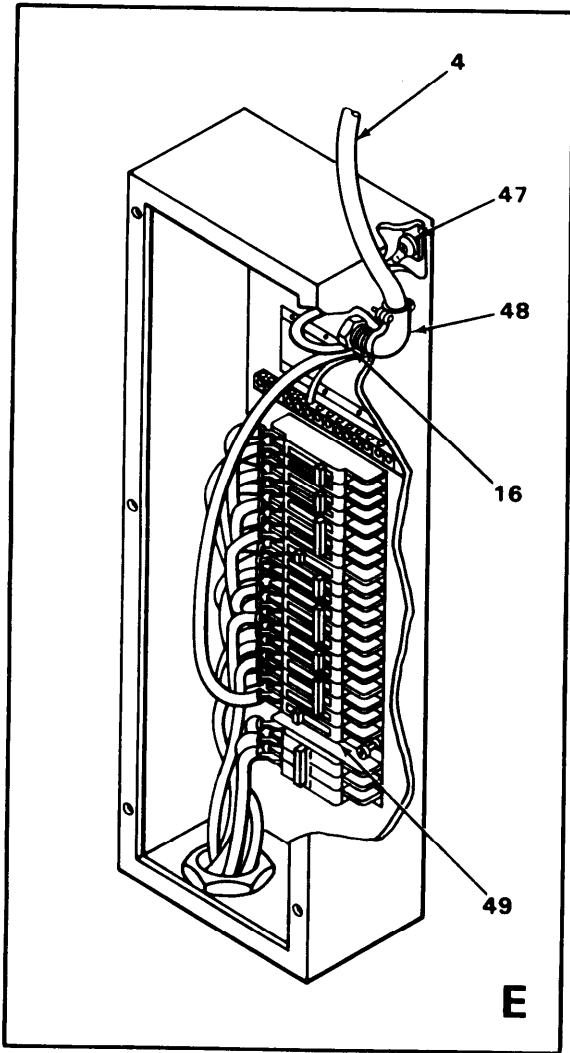
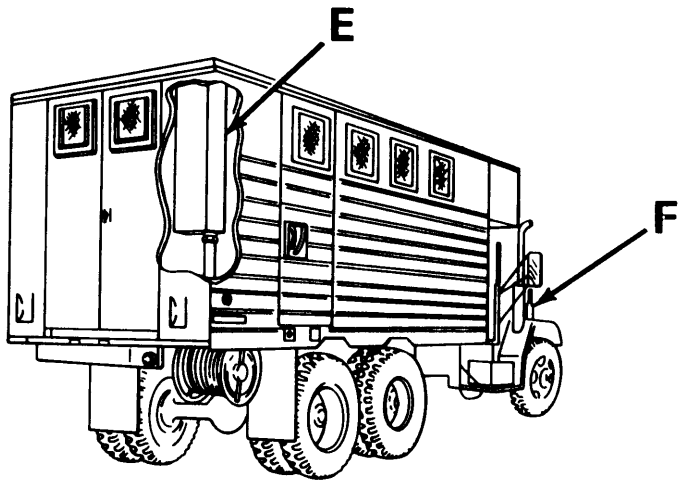
ELBXN002

Figure 1. Installation Kit MK-1818/GSG-10(V), Electronics Equipment (Sheet 2 of 4).



EL8XN003

Figure 1. Installation Kit MK-1818/GSG-10(V), Electronics Equipment (Sheet 3 of 4).



EL8XN015

Figure 1. Installation Kit MK-1818/GSG-10(V), Electronics Equipment (Sheet 4 of 4).

SECTION II

REPAIR PARTS LIST

TM11-7440-293-24P

| (1) ILLUS- TRATION (A) FIG NO | (B) ITEM NO | (2) SMR CODE | (3) NATIONAL STOCK NUMBER | (4) FSCM | (5) PART NUMBER | (6) DESCRIPTION | USABLE ON CODE | (7) U/M | (8) QTY INC IN UNIT |
|--|-------------------|--------------------|------------------------------------|-------------|-----------------------|--|----------------------|------------|---------------------------------|
| GROUP 00 INSTALLATION KIT MK-1818/GSG-10(V) | | | | | | | | | |
| 1 | 1 | XBOZZ | | 80058 | TSEC/KG-31 | KEY GENERATOR | | EA | 1 |
| 1 | 2 | PDFDD | 7025-01-041-6645 | 80058 | C-10097/GSC-21 | CONTROL DATA DSPL USED WITH VFMED | | EA | 1 |
| 1 | 3 | PAFDD | 7010-01-044-1677 | 80058 | R0-344/G | LINE PRINTER,ELEK | | EA | 1 |
| 1 | 4 | PAOZZ | 6145-00-023-6631 | 81349 | MIL-C-3432 | CABLE | | EA | 1 |
| 1 | 5 | PDFDD | 5820-00-892-0622 | 80058 | RT-524/VRC | RADIO RCEIVER-XMTR | | EA | 2 |
| 1 | 5A | PAOZZ | 7025-01-042-0325 | 80058 | MK-1783/GSC-21 | CABLE SET,VFMED | | EA | 1 |
| 1 | 6 | PAFDD | 7025-01-080-7693 | 80058 | J-3030/GSG10(V) | DISTRIBUTION BX,PWR | | EA | 1 |
| 1 | 7 | PAOZZ | 5802-00-937-9844 | 80063 | SC-C-279925-GP1 | CLAMP,ELEC,GND ROD PART OF KIT P/N SC-B-446190 | | EA | 2 |
| 1 | 8 | PAOZZ | 5310-00-022-8847 | 96906 | MS35333-110 | WASHER,LOCK PART OF KIT P/N SC-B-446190 | | EA | 7 |
| 1 | 9 | PAOZZ | 5310-00-543-4717 | 96906 | MS35425-28 | NUT,WING BRASS PAR OF KIT P/N SC-B-446190 | | EA | 1 |
| 1 | 10 | XBOZZ | | 80063 | SC-B-690642 | GROUND STRAP ASSY PART OF KIT P/N SC-B-446190 | | EA | 2 |
| 1 | 11 | PAOZZ | 5310-00-410-6457 | 96906 | MS35649-2385T | NUT,HEXAGON PART OF KIT P/N SC-B-446190 | | EA | 2 |
| 1 | 12 | XBOZZ | | 96906 | MS35229-112 | SCREW,PAN HEAD PART OF KIT P/N SC-B-446190 | | EA | 1 |
| 1 | 13 | PAOZZ | 5975-00-878-3791 | 81349 | MIL-R-11461 | ROD,GROUND PART OF KIT P/N SC-B-446190 | | EA | 2 |
| 1 | 14 | PAOZZ | 5340-00-010-4750 | 96906 | MS25281-F11 | CLAMP,LOOP,PLASTIC | | EA | 30 |
| 1 | 15 | XBOZZ | | 80063 | SC-C-866426 | CABLE CONNECTOR | | EA | 2 |
| 1 | 16 | XBOZZ | | 80063 | SC-D-691435-3 | CONDUIT LOCKNUT | | EA | 3 |
| 1 | 17 | XBOZZ | | 80063 | SC-C-866422 | OUTLET BOX | | EA | 1 |
| 1 | 18 | XBOZZ | | 80063 | SC-C-866425 | OUTLET PLATE | | EA | 1 |
| 1 | 19 | XBOZZ | | 80063 | SC-C-866424 | RECEPTACLE | | EA | 1 |
| 1 | 20 | XBOZZ | | 96906 | MS24637-27 | SCREW,METAL | | EA | 4 |
| 1 | 21 | PAOFF | 5930-01-119-2659 | 80063 | SC-D-866493 | SWITCH ASSY,DC/DC (SEE FIGURE 8 FOR BREAKDOWN) | | EA | 1 |
| 1 | 22 | PAOZZ | 5306-00-225-9087 | 96906 | MS90726-32 | SCREW,HEXAGON HEAD | | EA | 8 |
| 1 | 23 | PAOZZ | 5310-00-959-4679 | 96906 | MS35340-45 | WASHER,LOCK | | EA | 10 |
| 1 | 24 | PAOZZ | 5310-00-625-5756 | 96906 | MS15795-812 | WASHER,FLAT | | EA | 94 |
| 1 | 25 | PAFDD | 6130-00-635-4900 | 80058 | PP-1104/G | POWER SUPPLY | | EA | 1 |
| 1 | 26 | XBOZZ | | 80058 | SC-B-866402 | ANGLE ASSEMBLY | | EA | 2 |
| 1 | 27 | PAOZZ | 5310-00-809-8546 | 96906 | MS27183-8 | WASHER,ROUND | | EA | 10 |

| SECTION II (1) ILLUS- TRATION (A) FIG NO | (B) ITEM NO | (2) SMR CODE | (3) NATIONAL STOCK NUMBER | TM11-7440-293-24P | | (6) DESCRIPTION | USABLE ON CODE | (7) U/M | (8) QTY INC IN UNIT |
|--|-------------------|--------------------|------------------------------------|-------------------|-----------------|--|----------------------|------------|---------------------------------|
| | | | | (4) | (5) | | | | |
| 1 | 28 | PAOZZ | 5310-00-721-7809 | 96906 | MS35340-43 | WASHER, LOCK | | EA | 10 |
| 1 | 29 | PAOZZ | 5305-00-993-1848 | 96906 | MS55207-265 | SCREW, PAN HEAD | | EA | 14 |
| 1 | 30 | PAOZZ | 5995-01-117-7378 | 80063 | SC-D-866407 | CABLE ASSY, PWR, ELEC | | EA | 1 |
| 1 | 31 | XBOZZ | | 80063 | SC-C-866423 | PLUG, 3 PHASE, 3 WIRE | | EA | 1 |
| 1 | 32 | PAOZZ | 5310-00-401-5340 | 96906 | MS27130-33 | NUT, FLAT | | EA | 8 |
| 1 | 33 | PAOZZ | 5306-00-225-8499 | 96906 | MS90725-34 | SCREW, HEXAGON | | EA | 8 |
| 1 | 34 | XBOZZ | | 80063 | SC-C-866479 | GUARD ASSEMBLY | | EA | 1 |
| 1 | 35 | PAOZZ | 5310-00-806-1787 | 96906 | MS35426-2 | WING, NUT | | EA | 18 |
| 1 | 36 | PAOZZ | 5310-00-889-2527 | 96906 | MS45904-72 | WASHER, LOCK | | EA | 2 |
| 1 | 37 | PAOZZ | 5310-00-019-0672 | 96906 | MS35333-107 | WASHER, LOCK | | EA | 48 |
| 1 | 38 | PAOZZ | 5305-00-954-9546 | 96906 | MS35229-111 | SCREW, PAN HEAD | | EA | 1 |
| 1 | 39 | PAOZZ | | 96906 | MS35240-104 | SCREW, FLAT HD | | EA | 4 |
| 1 | 40 | PAOZZ | 5310-00-877-5797 | 96906 | MS21044N3 | NUT, HEXAGON | | EA | 4 |
| 1 | 41 | PAOZZ | 5310-00-080-9786 | 96906 | MS45904-60 | WASHER, LOCK | | EA | 4 |
| 1 | 42 | PAOZZ | 5310-00-761-6882 | 96906 | MS51967-2 | NUT, HEXAGON | | EA | 1 |
| 1 | 43 | PAOZZ | 5310-00-889-2528 | 96906 | MS45904-68 | WASHER, LOCK | | EA | 4 |
| 1 | 44 | PAOZZ | 5305-00-993-2463 | 96906 | MS35207-279 | SCREW, PAN HEAD | | EA | 1 |
| 1 | 45 | PAOZZ | 5310-00-022-8834 | 96906 | MS35333-108 | WASHER, LOCK | | EA | 2 |
| 1 | 46 | PAOZZ | 5305-00-068-0502 | 96906 | MS90725-6 | SCREW, HEXAGON | | EA | 1 |
| 1 | 47 | PAOZZ | 5940-00-143-4777 | 96906 | MS25036-157 | TERMINAL LUG, CRIMP | | EA | 1 |
| 1 | 48 | XBOZZ | | 80063 | SC-B-446190 | CABLE CONNECTOR | | EA | 1 |
| 1 | 49 | XBOZZ | | 80063 | SC-D-866330 | CIRCUIT BREAKER, SP | | EA | 1 |
| 1 | 50 | PAOHH | 5985-00-985-9024 | 80058 | AS-1729/VRC | ANTENNA ASSEMBLY (SEE TM 11-5895-262-24P FOR BREAKDOWN) | | EA | 2 |
| 1 | 51 | PAOZZ | 5305-00-269-3215 | 96906 | MS90725-65 | SCREW, HEXAGON HEAD | | EA | 8 |
| 1 | 52 | PAOZZ | 5310-00-637-9541 | 96906 | MS35338-46 | WASHER, LOCK | | EA | 8 |
| 1 | 53 | PAOZZ | 5310-00-778-2813 | 96906 | MS51967-7 | NUT, HEXAGON | | EA | 8 |
| 1 | 54 | PAOZZ | 5305-00-857-5867 | 96906 | MS9122-03 | SCREW, HEXAGON | | EA | 2 |
| 1 | 55 | PAOZZ | 5995-00-192-9614 | 80063 | SC-C-27813-GPIX | BONDING JUMPER | | EA | 2 |
| 1 | 56 | XBOZZ | | 80058 | SC-B-866059 | ANTENNA MOUNT ASSY | | EA | 2 |
| 1 | 57 | PAOZZ | 5310-00-061-1258 | 96906 | MS45904-76 | WASHER, LOCK | | EA | 8 |

| SECTION II (1) ILLUS- TRATION (A) FIG NO | | (2) SMR CODE | (3) NATIONAL STOCK NUMBER | TM11-7440-293-24P (4) (5) FSCM PART NUMBER | | (6) DESCRIPTION | USABLE ON CODE | (7) U/M | (8) QTY INC IN UNIT |
|--|----|--------------------|------------------------------------|---|-------------|----------------------|----------------------|------------|---------------------------------|
| 1 | 58 | PAOZZ | 5305-00-269-2807 | 96906 | MS90726-64 | SCREW, HEXAGON HEAD | | EA | 8 |
| 1 | 59 | PAOZZ | 5820-00-078-3895 | 80063 | PPL-2183 | SHEET METAL SCREW | | EA | 2 |
| 1 | 60 | PAOZZ | 5820-00-752-5738 | 80063 | PPL-914 | CLAMP, STRAP | | EA | 1 |
| 1 | | PAOZZ | | 80063 | SC-B-466190 | GROUND ROD KIT | | EA | 1 |
| 1 | 7 | | | | | CLAMP, ELEC, GND ROD | | EA | 2 |
| 1 | 8 | | | | | WASHER, LOCK | | EA | 7 |
| 1 | 9 | | | | | NUT, WING BRASS | | EA | 1 |
| 1 | 10 | | | | | GROUND STRAP ASSY | | EA | 2 |
| 1 | 11 | | | | | NUT, HEXAGON | | EA | 2 |
| 1 | 12 | | | | | SCREW, PAN HEAD | | EA | 1 |
| 1 | 13 | | | | | ROD, GROUND | | EA | 2 |

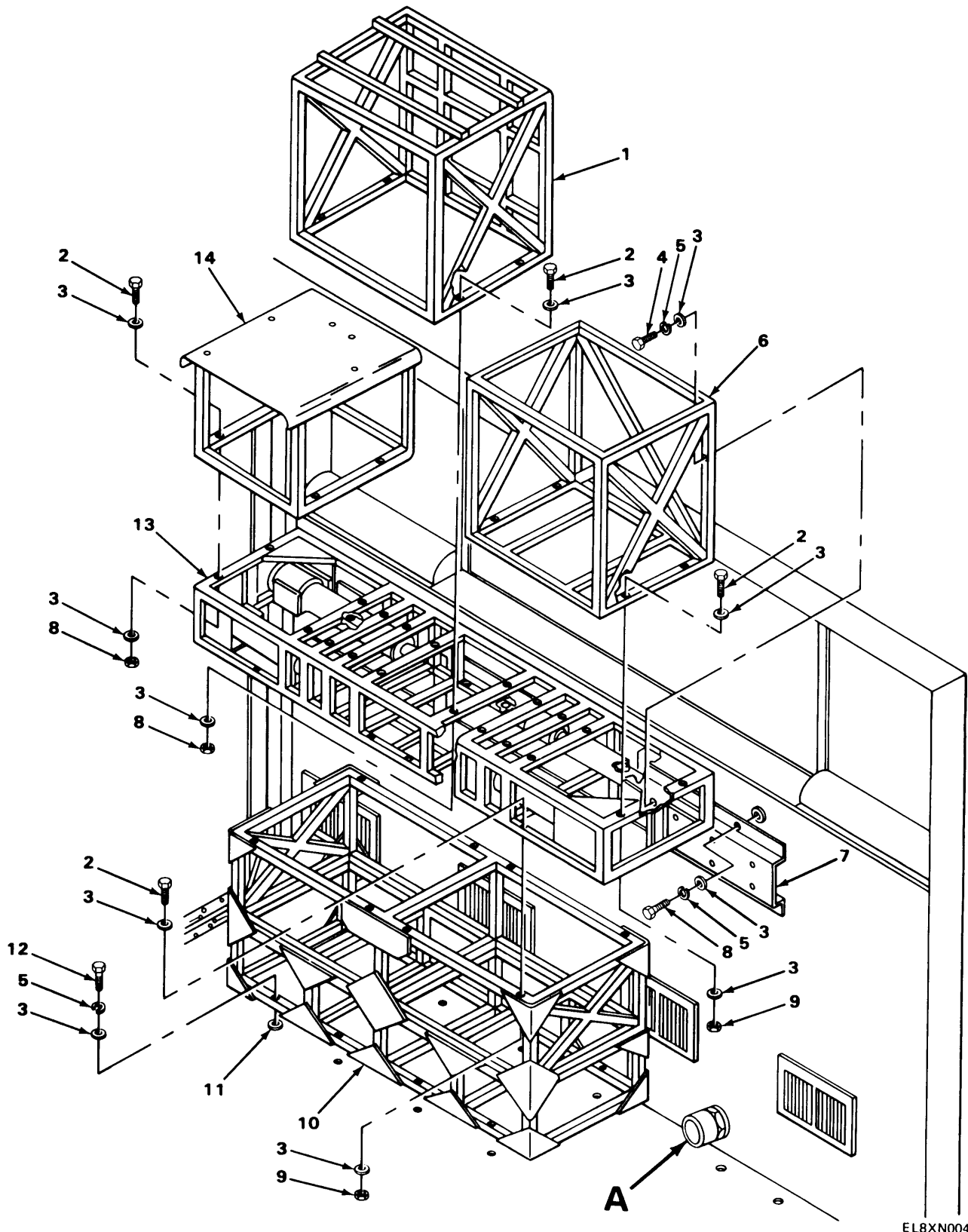
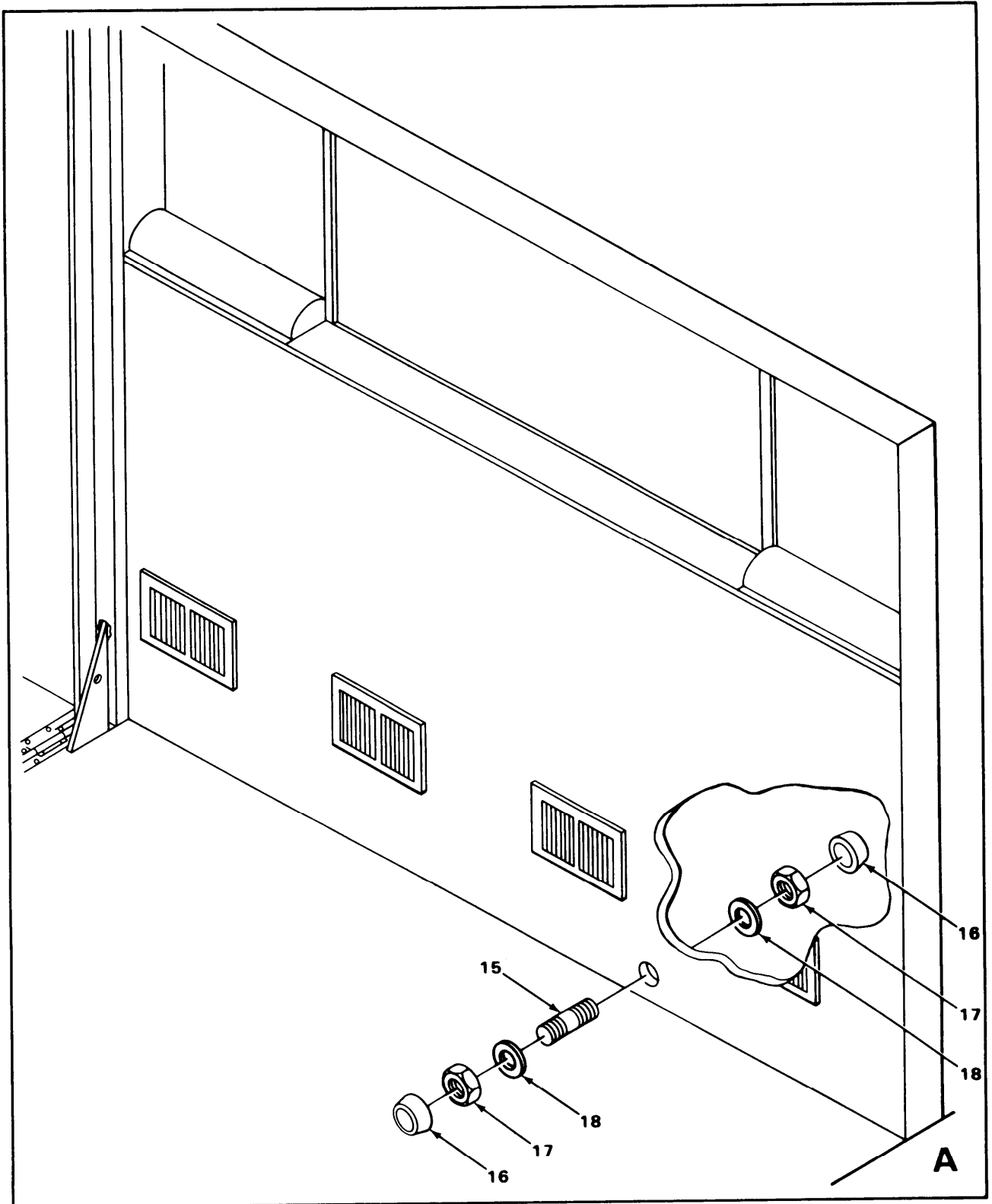
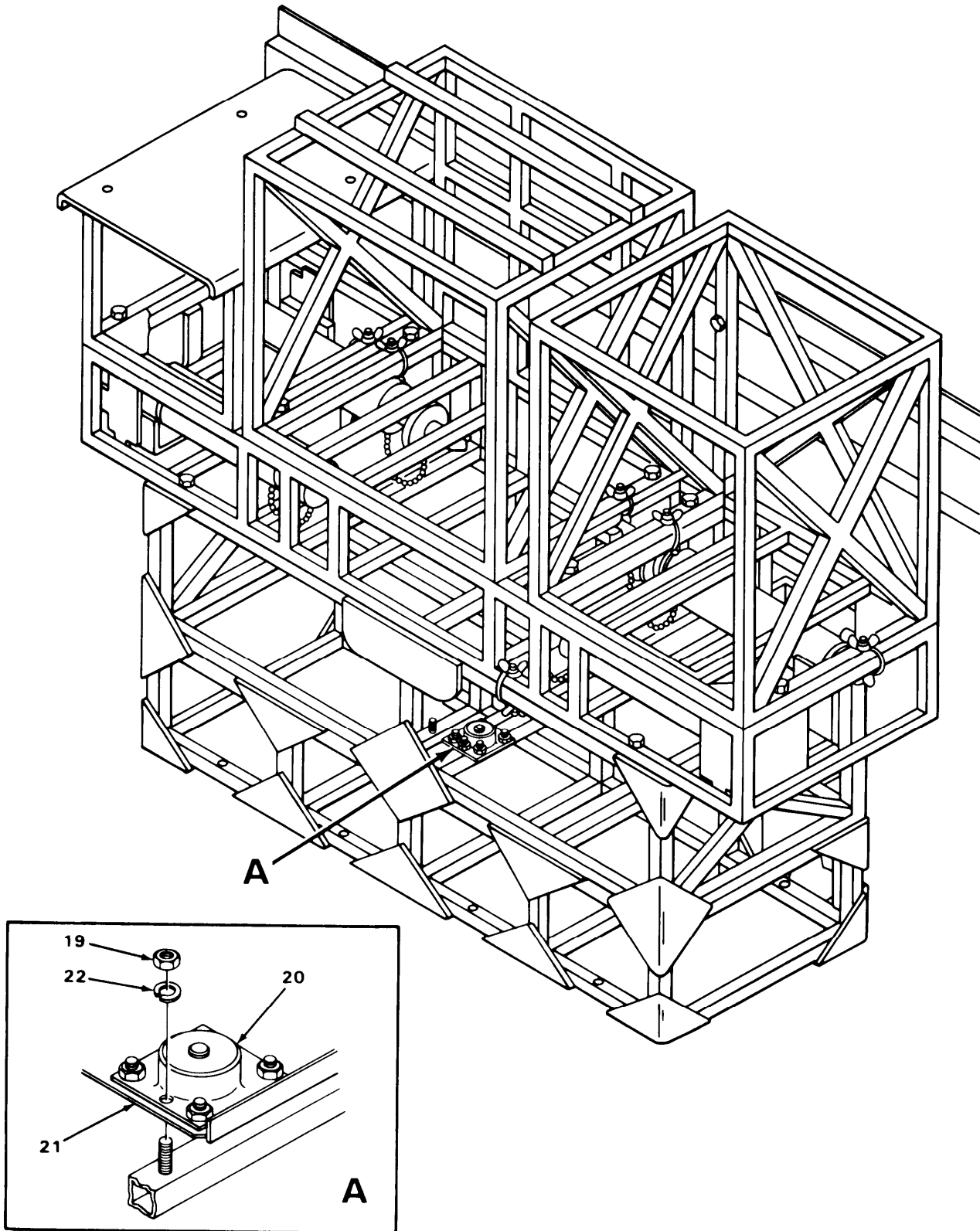


Figure 2. Installation Kit MK-1818/GSG-10(V), Rack Assemblies (Sheet 1 of 3)



EL8XN005

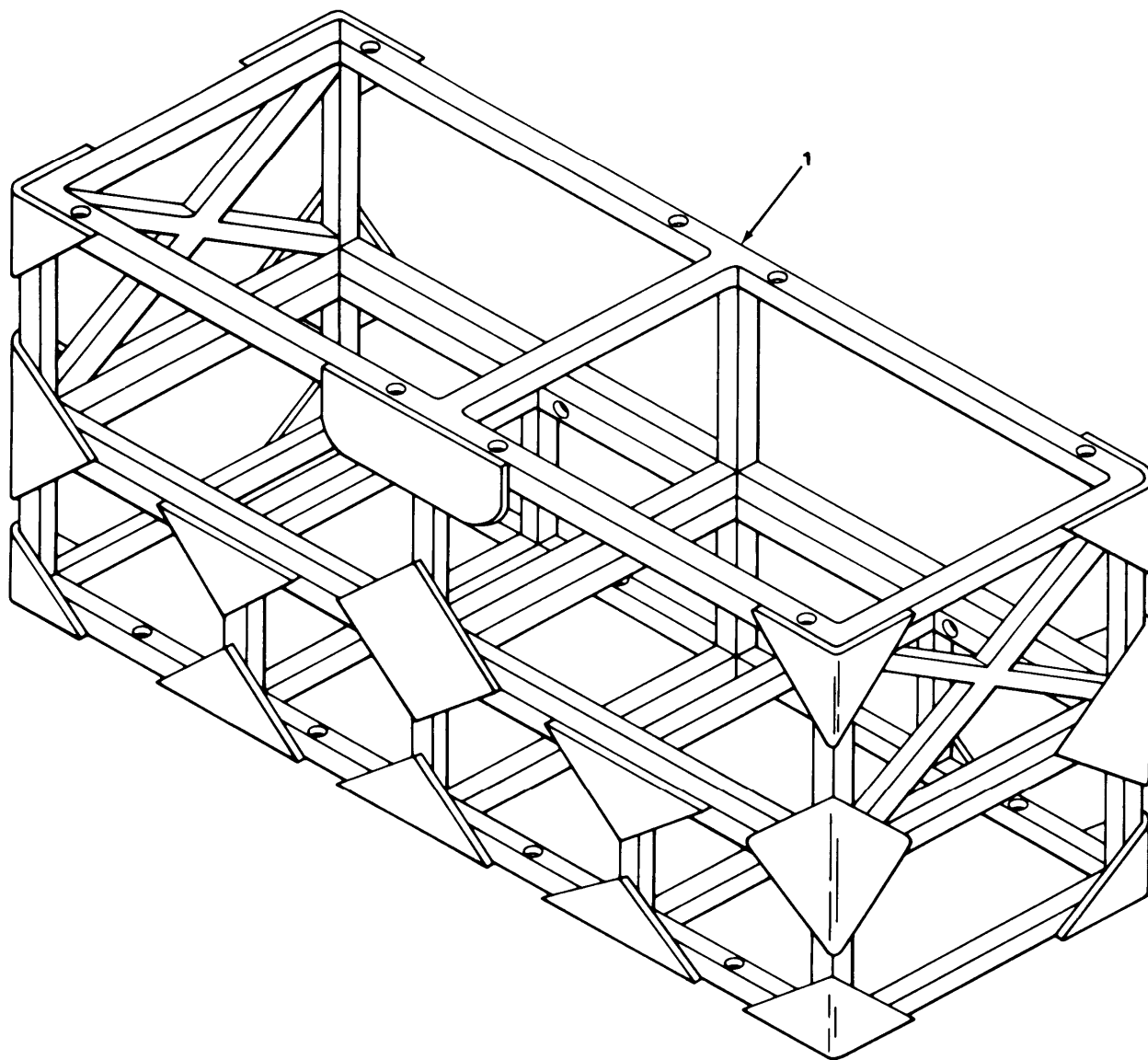
Figure 2. Installation Kit MK-1818/GSG-10(V), Rack Assemblies (Sheet 2 of 3).



ELBXN016

Figure 2. Installation Kit MK-1818/GSG-10(V), Rack Assemblies (Sheet 3 of 3).

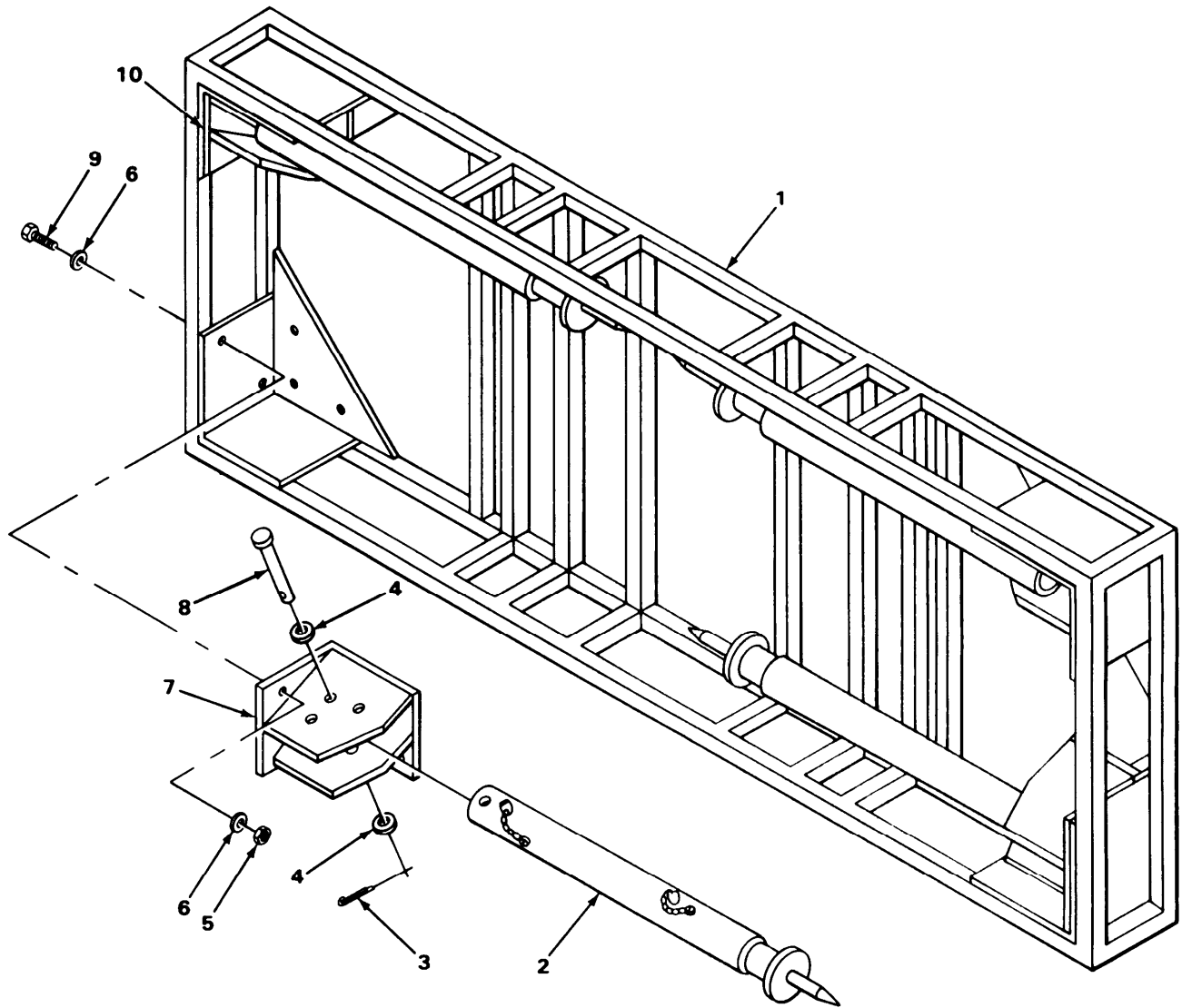
| SECTION II (1) ILLUS- TRATION (A) FIG NO | | (2) SMR CODE | (3) NATIONAL STOCK NUMBER | TM11-7440-293-24P (4) (5) | | (6) DESCRIPTION | USABLE ON CODE | (7) U/M | (8) QTY INC IN UNIT |
|--|----|--------------------|------------------------------------|------------------------------|----------------|---|----------------------|------------|---------------------------------|
| 2 | 1 | PAOFF | 5975-01-117-7322 | 80058 | MT-4391/GSG10 | RACK,ELEC,EQUIPT (SEE FIGURE 6 FOR BREAKDOWN) | | EA | 1 |
| 2 | 2 | PAOZZ | 5306-00-225-9096 | 96906 | MS90726-41 | SCREW,HEXAGON HEAD | | EA | 8 |
| 2 | 3 | PAOZZ | 5310-00-625-5756 | 96906 | MS15795-812 | WASHER,FLAT | | EA | 21 |
| 2 | 4 | PAOZZ | 5306-00-225-9093 | 96906 | MS90726-38 | BOLT,MACHINE | | EA | 6 |
| 2 | 5 | PAOZZ | 5310-00-682-5930 | 96906 | MS35340-45 | WASHER,LOCK | | EA | 21 |
| 2 | 6 | PAOFF | 5975-01-117-7323 | 80058 | MT-4392/GSG10 | RACK,ELEC,EQUIPT (SEE FIGURE 7 FOR BREAKDOWN) | | EA | 1 |
| 2 | 7 | XBOZZ | | 80063 | SC-B-866404 | MOUNT ASSY,WALL | | EA | 1 |
| 2 | 8 | PAOZZ | 5306-00-225-8499 | 96906 | MS90725-34 | SCREW,HEXAGON HEAD | | EA | 6 |
| 2 | 9 | PAOZZ | 5310-00-984-3807 | 96906 | MS51922-13 | NUT,SELF-LOCKING | | EA | 26 |
| 2 | 10 | XBOFF | | 80058 | MT-4396 | MOUNTING BASE,MT (SEE FIGURE 3 FOR BREAKDOWN) | | EA | 1 |
| 2 | 11 | PAOZZ | 5310-00-401-5340 | 96906 | MS27130-33 | NUT,FLAT | | EA | 14 |
| 2 | 12 | PAOZZ | 5306-00-225-8502 | 96906 | MS90725-38 | SCREW,HEXAGON HEAD | | EA | 8 |
| 2 | 13 | PAOFF | 5895-01-119-8668 | 80058 | MT-4394/GSG10 | TABLE,ELEC,EQUIPT(SEE FIGURE 4 FOR BREAKDOWN) | | EA | 1 |
| 2 | 14 | PAOFF | 5975-01-117-7324 | 80058 | MT-493/GSG10 | RACK,ELEC,EQUIPT (SEE FIGURE 5 FOR BREAKDOWN) | | EA | 1 |
| 2 | 15 | XBOZZ | | 80063 | SC-C-691280-36 | PIPE NIPPLE | | EA | 2 |
| 2 | 16 | XBOZZ | | 80063 | SC-C-691284-5 | INSULATING BUSHING | | EA | 4 |
| 2 | 17 | XBOZZ | | 80063 | SC-D-691435-6 | LOCKNUT,CONDUIT | | EA | 4 |
| 2 | 18 | XBOZZ | | 80063 | SC-C-866464 | WASHER,ALUMINUM | | EA | 1 |
| 2 | 19 | PAOZZ | 5310-00-880-7744 | 96906 | MS51967-5 | NUT,HEXAGON | | EA | 10 |
| 2 | 20 | PAOZZ | 5820-00-893-1323 | 80063 | SC-B-414975 | MOUNTING MT-1029/VRC | | EA | 2 |
| 2 | 21 | PAOZZ | 5895-01-117-7197 | 80058 | MT-6188G | MOUNT,RADIO MT-4395 | | EA | 1 |
| 2 | 22 | PAOZZ | 5310-00-514-6674 | 96906 | MS35335-34 | WASHER,LOCK | | EA | 10 |



EL8XN006

Figure 3. Radio Mount.

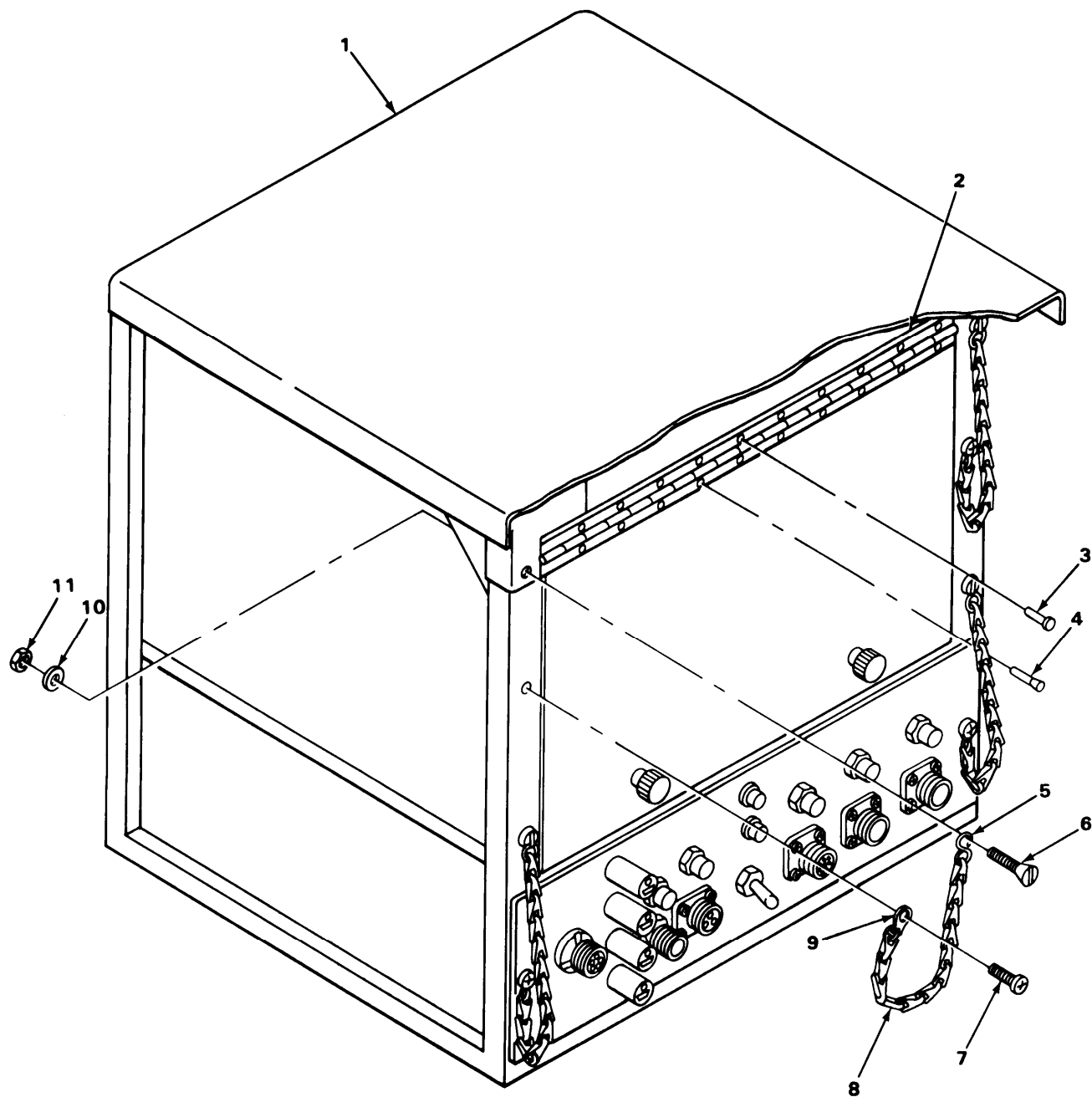
| SECTION II (1) ILLUS- TRATION (A) FIG NO | | (2) SMR CODE | (3) NATIONAL STOCK NUMBER | TM11-7440-293-24P (4) (5) FSCM PART NUMBER | | (6) DESCRIPTION | USABLE ON CODE | (7) U/M | (8) QTY INC IN UNIT |
|--|---|--------------------|------------------------------------|---|----------|---|----------------------|------------|---------------------------------|
| 3 | 1 | XBFZZ | | 56996 | B4005076 | GROUP 01 RADIO MOUNT MOUNT,RADIO DR ASSY | | EA | 1 |



EL8XN007

Figure 4. Table Mount

| SECTION II (1) ILLUS- TRATION (A) FIG NO | | (2) SMR CODE | (3) NATIONAL STOCK NUMBER | TM11-7440-293-24P (4) (5) FSCM PART NUMBER | | (6) DESCRIPTION | USABLE ON CODE | (7) U/M | (8) QTY INC IN UNIT |
|--|----|--------------------|------------------------------------|---|---------------|-----------------------|----------------------|------------|---------------------------------|
| GROUP 02 TABLE MOUNT | | | | | | | | | |
| 4 | 1 | XBFZZ | | 80063 | SC-D-690586 | TABLE, DRILLED | | EA | 1 |
| 4 | 2 | XBFZZ | | 80063 | SC-B-690589 | LEG ASSEMBLY | | EA | 4 |
| 4 | 3 | PAFZZ | 5315-00-839-5822 | 96906 | MS24665-353 | PIN, COTTER | | EA | 4 |
| 4 | 4 | PAFZZ | 5310-00-922-1793 | 96906 | MS15795-843 | WASHER, FLAT | | EA | 8 |
| 4 | 5 | PAFZZ | 5310-00-088-0553 | 96906 | MS21044N5 | NUT, SELF-LOCKING, HE | | EA | 8 |
| 4 | 6 | PAFZZ | 5310-00-625-5756 | 96906 | MS15795-812 | WASHER, FLAT | | EA | 16 |
| 4 | 7 | XBFZZ | | 80063 | SC-D-690588-1 | CORNER FITTING | | EA | 2 |
| 4 | 8 | XBFZZ | | 96906 | MS20392-8C93 | PIN, STRAIGHT | | EA | 4 |
| 4 | 9 | PAFZZ | 5036-00-225-9089 | 96906 | MS90726-34 | BOLT, MACHINE | | EA | 8 |
| 4 | 10 | XBFZZ | | 80063 | SC-D-690588-2 | CORNER FITTING | | EA | 2 |



ELBXN008

Figure 5. Key Generator Rack.

| SECTION II (1) ILLUS- TRATION (A) FIG NO | | (2) SMR CODE | (3) NATIONAL STOCK NUMBER | TM11-7440-293-24P (4) (5) FSCM PART NUMBER | | (6) DESCRIPTION | USABLE ON CODE | (7) U/M | (8) QTY INC IN UNIT |
|--|----|--------------------|------------------------------------|---|---------------|-----------------------|----------------------|------------|---------------------------------|
| GROUP 03 KEY GENERATOR RACK | | | | | | | | | |
| 5 | 1 | XBFZZ | | 80063 | SC-D-690666 | RACK, WELDED | | EA | 1 |
| 5 | 2 | PAFZZ | 5340-00-269-4045 | 96906 | MS20257P3-312 | HINGE, BUTT | | EA | 1 |
| 5 | 3 | PAFZZ | 5320-00-234-8559 | 96906 | MS20470A4-18 | RIVET, SOLID | | EA | 10 |
| 5 | 4 | PAFZZ | 5320-00-264-3276 | 96906 | MS20426A4-12 | RIVET, SOLID | | EA | 10 |
| 5 | 5 | PAFZZ | 4030-00-930-3154 | 96906 | MS87006-51 | HOOK CHAIN, S | | EA | 4 |
| 5 | 6 | XBFZZ | | 96906 | MS24693-316 | SCREW, MACHINE | | EA | 4 |
| 5 | 7 | PAFZZ | 5305-00-883-0633 | 96906 | MS24617-11 | SCREW, TAPPING, THREA | | EA | 4 |
| 5 | 8 | PAFZZ | 6150-00-583-3516 | 96906 | MS25083-3886 | LEAD, ELECTRICAL | | EA | 4 |
| 5 | 9 | PAFZZ | 5940-00-688-6009 | 96906 | MS20659-51 | TERMINAL LUG | | EA | 4 |
| 5 | 10 | PAFZZ | 5310-00-081-4219 | 96906 | MS27183-12 | WASHER, FLAT | | EA | 4 |
| 5 | 11 | PAFZZ | 5310-00-088-0553 | 96906 | MS21044N5 | NUT, SELF-LOCKING, HE | | EA | 4 |

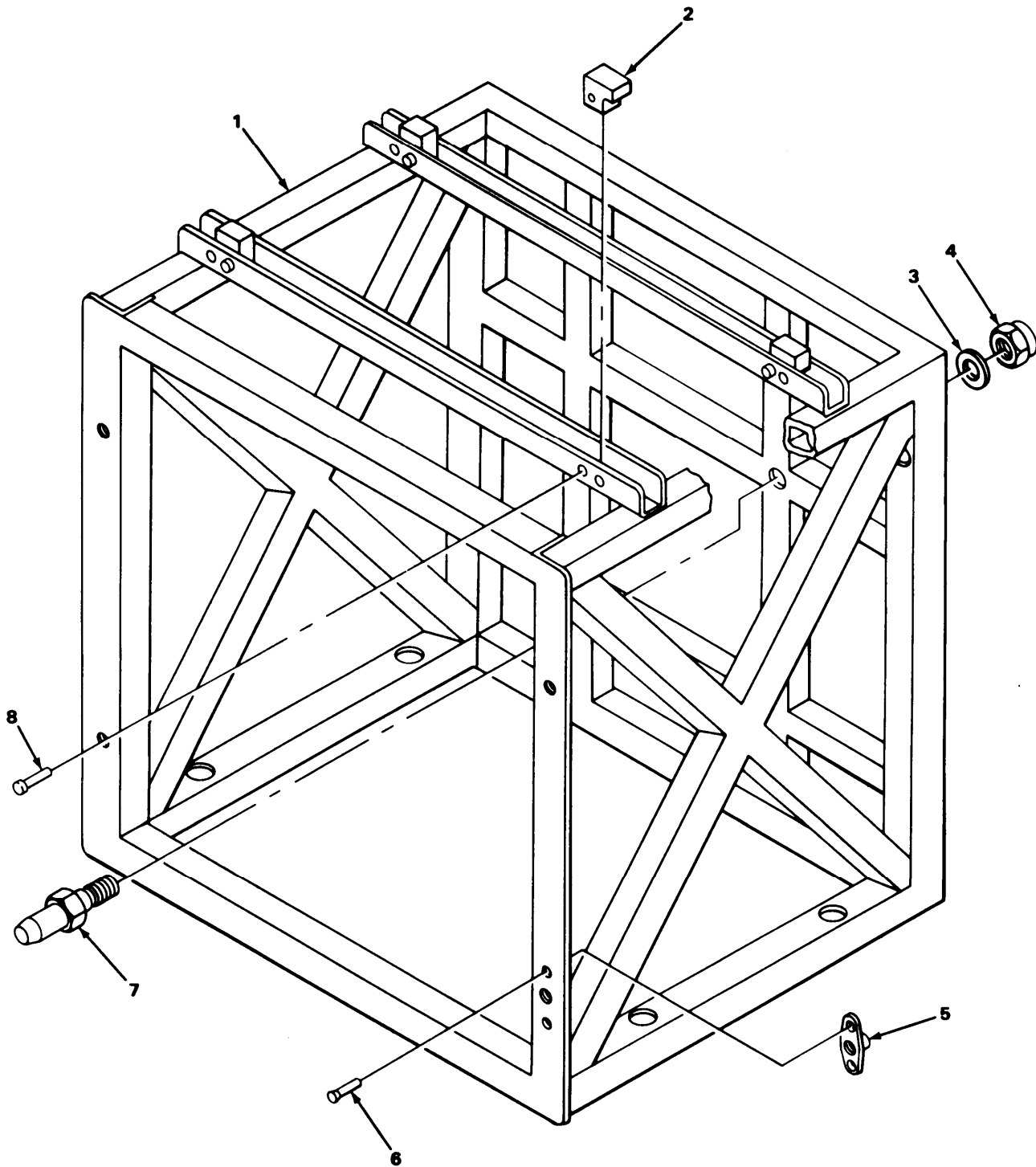
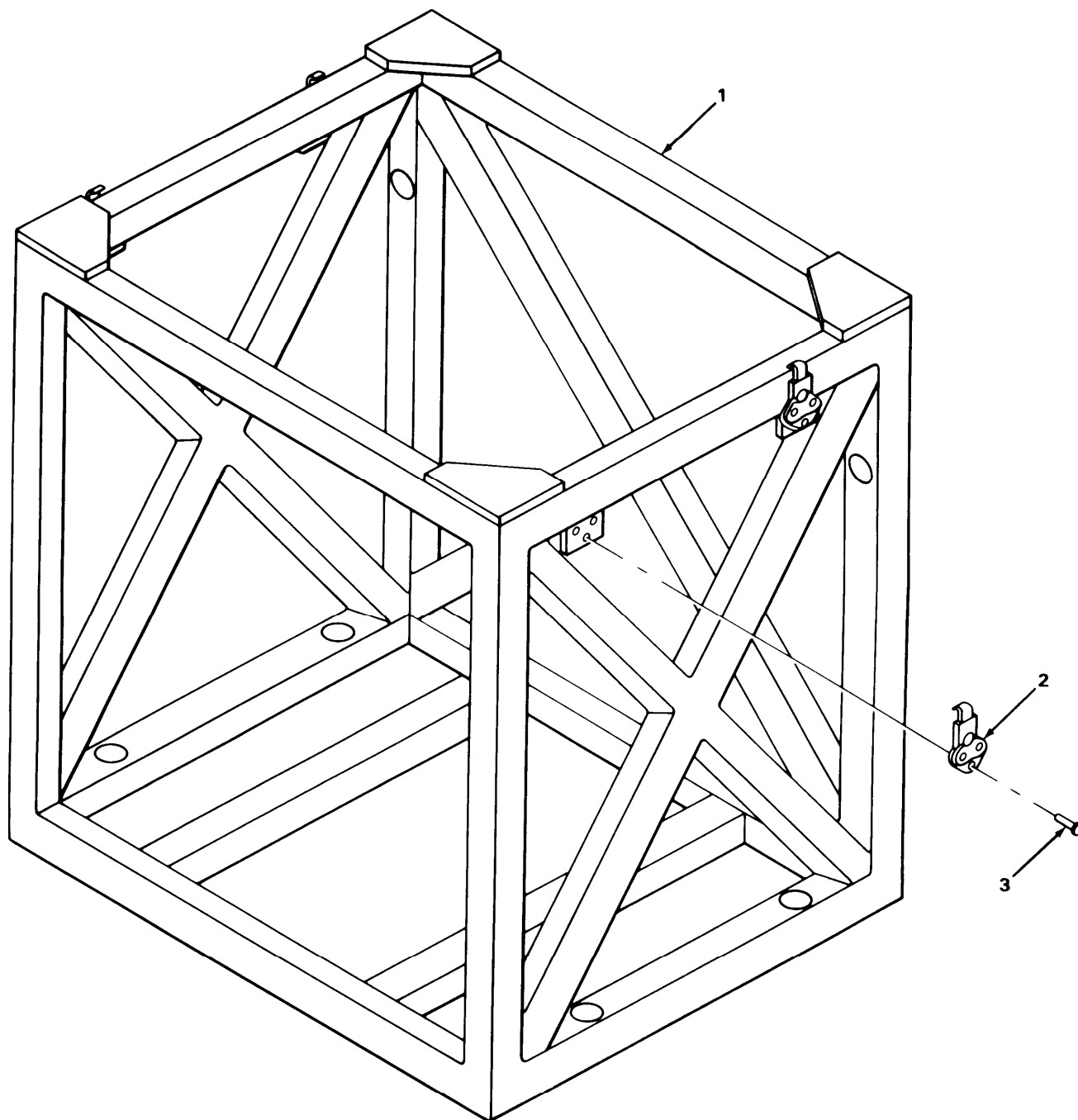


Figure 6. Message Entry Group Rack.

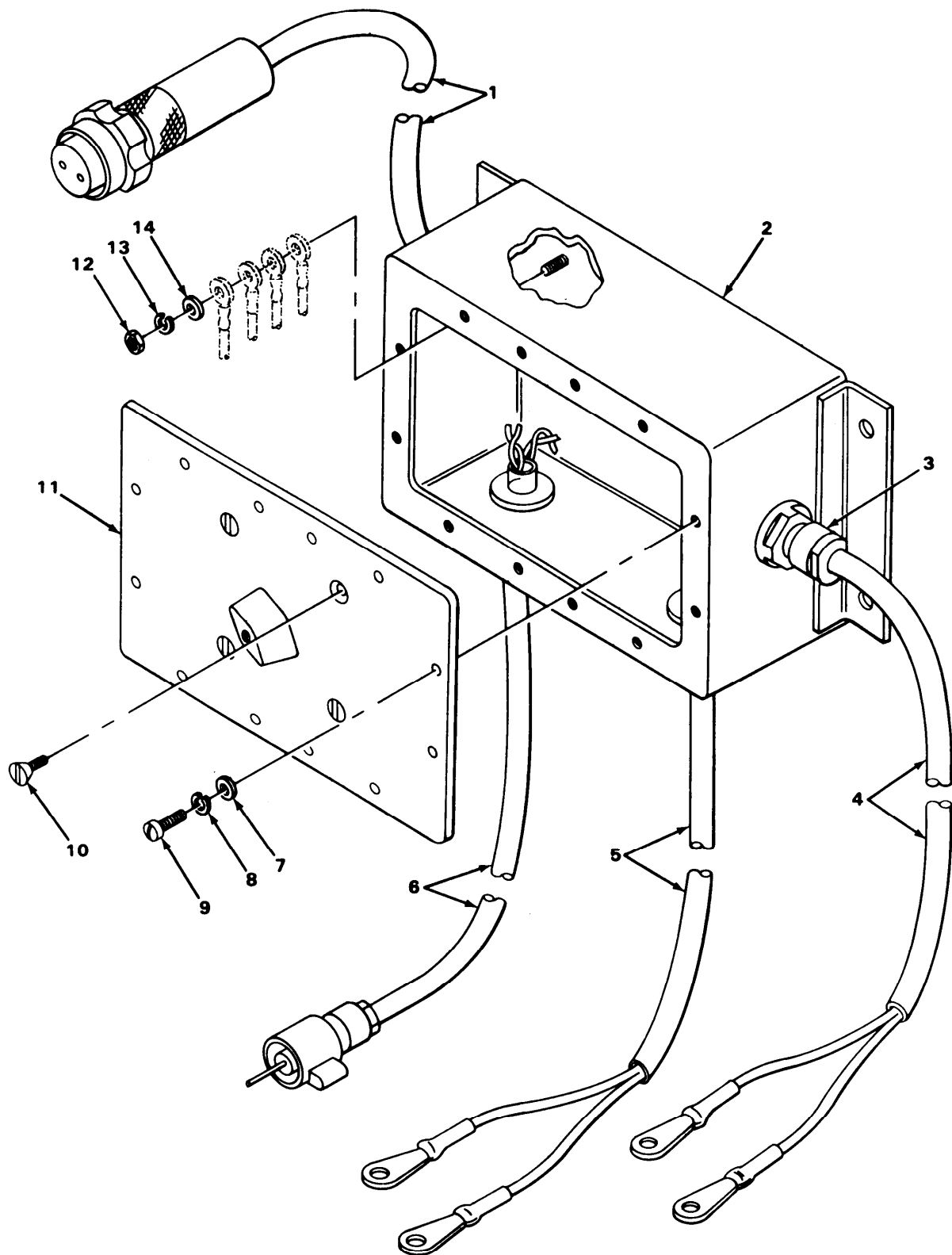
| SECTION II (1) ILLUS- TRATION (A) FIG NO | | (2) SMR CODE | (3) NATIONAL STOCK NUMBER | TM11-7440-293-24P (4) (5) FSCM PART NUMBER | | (6) DESCRIPTION | USABLE ON CODE | (7) U/M | (8) QTY INC IN UNIT |
|--|---|--------------------|------------------------------------|---|--------------|-----------------------|----------------------|------------|---------------------------------|
| GROUP 04 MESSAGE ENTRY GROUP RACK | | | | | | | | | |
| 6 | 1 | XBFZZ | | 80063 | SC-D-690676 | RACK, WELDED | | EA | 1 |
| 6 | 2 | XBFZZ | | 80063 | SC-B-690601 | COVER, MOUNTING BLOC | | EA | 4 |
| 6 | 3 | PAFZZ | 5310-00-080-6004 | 96906 | MS27183-14 | WASHER, FLAT | | EA | 2 |
| 6 | 4 | PAFZZ | 5310-00-950-0039 | 96906 | MS21044N6 | NUT, SELF-LOCKING, HE | | EA | 2 |
| 6 | 5 | PAFZZ | 5310-00-688-1998 | 80205 | NAS1031-N8 | NUT, SELF-LOCKING, PL | | EA | 4 |
| 6 | 6 | PAFZZ | 5320-01-094-9941 | 96906 | MS9318-104 | RIVET, SOLID | | EA | 8 |
| 6 | 7 | XBFZZ | | 80063 | SC-C-690599 | PIN | | EA | 2 |
| 6 | 8 | PAFZZ | 5320-00-245-4331 | 96906 | MS2047086-22 | RIVET, SOLID | | EA | 4 |



ELBXN010

Figure 7. Electronic Line Printer Rack.

| SECTION II (1) ILLUS- TRATION (A) FIG NO | | (2) SMR CODE | (3) NATIONAL STOCK NUMBER | TM11-7440-293-24P (4) (5) FSCM PART NUMBER | | (6) DESCRIPTION | USABLE ON CODE | (7) U/M | (8) QTY INC IN UNIT |
|--|---|--------------------|------------------------------------|---|---------------|--------------------|----------------------|------------|---------------------------------|
| GROUP 05 ELECTRONIC LINE PRINTER RACK | | | | | | | | | |
| 7 | 1 | XBFZZ | | 80063 | SC-D-690597 | RACK,WELDED | | EA | 1 |
| 7 | 2 | XBFZZ | | 80063 | SM-B-690133 | LATCH | | EA | 4 |
| 7 | 3 | PAFZZ | 5320-00-616-5547 | 96906 | MS20600-MP4W1 | RIVET,BLIND | | EA | 12 |



EL8XN012

Figure 8. DC/DC Switch.

| SECTION II (1) ILLUS- TRATION (A) FIG NO | | (2) SMR CODE | (3) NATIONAL STOCK NUMBER | TM11-7440-293-24P (4) (5) FSCM PART NUMBER | | (6) DESCRIPTION | USABLE ON CODE | (7) U/M | (8) QTY INC IN UNIT |
|--|----|--------------------|------------------------------------|---|-----------------|---------------------|----------------------|------------|---------------------------------|
| GROUP 11 DC/DC SWITCH | | | | | | | | | |
| 8 | 1 | PAFZZ | 5995-01-117-7292 | 80063 | SC-D-866500 | CABLE ASSY,PWR ELEC | | EA | 1 |
| 8 | 2 | XBFZZ | | 80063 | SC-D-866494 | DC/DC/SWITCH BOX | | EA | 1 |
| 8 | 3 | XBFZZ | | 80063 | SC-D-16576GP111 | CONNECTOR,WTR PRF | | EA | 4 |
| 8 | 4 | PAFZZ | 5995-01-117-7379 | 80063 | SC-D-866501 | CABLE ASSY,PWR ELEC | | EA | 1 |
| 8 | 5 | PAFZZ | 5995-01-117-7293 | 80063 | SC-D-866502 | CABLE ASSY,PWR ELEC | | EA | 1 |
| 8 | 6 | PAFZZ | 5995-01-117-7291 | 80063 | SC-D-866499 | CABLE ASSY,PWR ELEC | | EA | 1 |
| 8 | 7 | PAFZZ | 5310-00-983-9732 | 80063 | MS9321-06 | WASHER,FLAT | | EA | 12 |
| 8 | 8 | PAFZZ | 5310-00-929-6395 | 80063 | MS35338-136 | WASHER,LOCK | | EA | 12 |
| 8 | 9 | PAFZZ | 5305-00-054-6652 | 80063 | MS51957-28 | SCREW,PAN HEAD | | EA | 12 |
| 8 | 10 | PAFZZ | 5305-00-725-7878 | 80063 | MS24693-C94 | SCREW,FLAT HEAD CSK | | EA | 4 |
| 8 | 11 | XBFZZ | | 80063 | SC-D-866495 | COVER,ASSEMBLY | | EA | 1 |
| 8 | 12 | PAFZZ | 5310-00-903-5966 | 80063 | MS35690-410 | NUT,HEXGON | | EA | 1 |
| 8 | 13 | PAFZZ | 5310-00-933-8121 | 80063 | MS35338-139 | WASHER,LOCK | | EA | 1 |
| 8 | 14 | PAFZZ | 5310-00-763-3925 | 80063 | MS9321-10 | WASHER,FLAT | | EA | 1 |

NATIONAL STOCK NUMBER AND PART NUMBER INDEX

| National Stock Number | Figure No | Item No | National Stock Number | Figure No | Item No |
|--------------------------|--------------|------------|--------------------------|--------------|------------|
| 5340-00-010-4750 | 1 | 14 | 5820-00-893-1323 | 2 | 20 |
| 5310-00-019-0672 | 1 | 37 | 5310-00-903-5966 | 8 | 12 |
| 5310-00-022-8834 | 1 | 45 | 5310-00-922-1793 | 4 | 4 |
| 5310-00-022-8847 | 1 | 8 | 5310-00-929-6395 | 8 | 8 |
| 6145-00-023-6631 | 1 | 4 | 4030-00-930-3154 | 5 | 5 |
| 5305-00-054-6652 | 8 | 9 | 5310-00-933-8121 | 8 | 13 |
| 5310-00-061-1258 | 1 | 57 | 5802-00-937-9844 | 1 | 7 |
| 5305-00-068-0502 | 1 | 46 | 5310-00-950-0039 | 6 | 4 |
| 5820-00-078-3895 | 1 | 59 | 5305-00-954-9546 | 1 | 38 |
| 5310-00-080-6004 | 6 | 3 | 5310-00-959-4679 | 1 | 23 |
| 5310-00-080-9786 | 1 | 41 | 5310-00-983-9732 | 8 | 7 |
| 5310-00-081-4219 | 5 | 10 | 5310-00-984-3807 | 2 | 9 |
| 5310-00-088-0553 | 4 | 5 | 5985-00-985-9024 | 1 | 50 |
| 5310-00-088-0553 | 5 | 11 | 5305-00-993-1848 | 1 | 29 |
| 5940-00-143-4777 | 1 | 47 | 5305-00-993-2463 | 1 | 44 |
| 5995-00-192-9614 | 1 | 55 | 7025-01-041-6645 | 1 | 2 |
| 5306-00-225-8499 | 1 | 33 | 7025-01-042-0325 | 1 | 5 |
| 5306-00-225-8499 | 2 | 8 | 7010-01-044-1677 | 1 | 3 |
| 5306-00-225-8502 | 2 | 12 | 7025-01-080-7693 | 1 | 6 |
| 5306-00-225-9087 | 1 | 22 | 5320-01-094-9941 | 6 | 6 |
| 5036-00-225-9089 | 4 | 9 | 5895-01-117-7197 | 2 | 21 |
| 5306-00-225-9093 | 2 | 4 | 5995-01-117-7291 | 8 | 6 |
| 5306-00-225-9096 | 2 | 2 | 5995-01-117-7292 | 8 | 1 |
| 5320-00-234-8559 | 5 | 3 | 5995-01-117-7293 | 8 | 5 |
| 5320-00-245-4331 | 6 | 8 | 5975-01-117-7322 | 2 | 1 |
| 5320-00-264-3276 | 5 | 4 | 5975-01-117-7323 | 2 | 6 |
| 5305-00-269-2807 | 1 | 58 | 5975-01-117-7324 | 2 | 14 |
| 5305-00-269-3215 | 1 | 51 | 5995-01-117-7378 | 1 | 30 |
| 5340-00-269-4045 | 5 | 2 | 5995-01-117-7379 | 8 | 4 |
| 5310-00-401-5340 | 1 | 32 | 5930-01-119-2659 | 1 | 21 |
| 5310-00-401-5340 | 2 | 11 | 5895-01-119-8668 | 2 | 13 |
| 5310-00-410-6457 | 1 | 11 | | | |
| 5310-00-514-6674 | 2 | 22 | | | |
| 5310-00-543-4717 | 1 | 9 | | | |
| 6150-00-583-3516 | 5 | 8 | | | |
| 5320-00-616-5547 | 7 | 3 | | | |
| 5310-00-625-5756 | 1 | 24 | | | |
| 5310-00-625-5756 | 2 | 3 | | | |
| 5310-00-625-5756 | 4 | 6 | | | |
| 6130-00-635-4900 | 1 | 25 | | | |
| 5310-00-637-9541 | 1 | 52 | | | |
| 5310-00-682-5930 | 2 | 5 | | | |
| 5310-00-688-1998 | 6 | 5 | | | |
| 5940-00-688-6009 | 5 | 9 | | | |
| 5310-00-721-7809 | 1 | 28 | | | |
| 5305-00-725-7878 | 8 | 10 | | | |
| 5820-00-752-5738 | 1 | 60 | | | |
| 5310-00-761-6882 | 1 | 42 | | | |
| 5310-00-763-3925 | 8 | 14 | | | |
| 5310-00-778-2813 | 1 | 53 | | | |
| 5310-00-806-1787 | 1 | 35 | | | |
| 5310-00-809-8546 | 1 | 27 | | | |
| 5315-00-839-5822 | 4 | 3 | | | |
| 5305-00-857-5867 | 1 | 54 | | | |
| 5310-00-877-5797 | 1 | 40 | | | |
| 5975-00-878-3791 | 1 | 13 | | | |
| 5310-00-880-7744 | 2 | 19 | | | |
| 5305-00-883-0633 | 5 | 7 | | | |
| 5310-00-889-2527 | 1 | 36 | | | |
| 5310-00-889-2528 | 1 | 43 | | | |

NATIONAL STOCK NUMBER AND PART NUMBER INDEX

| FSCM | PART NUMBER | NATIONAL STOCK NUMBER | FIGURE NO | ITEM NO | FSCM | PART NUMBER | NATIONAL STOCK NUMBER | FIGURE NO | ITEM NO |
|-------|-----------------|-----------------------|-----------|---------|-------|-----------------|-----------------------|-----------|---------|
| 80058 | AS-1729/VRC | 5985-00-985-9024 | 1 | 50 | 96906 | MS5207-265 | 5305-00-993-1848 | 1 | 29 |
| 56996 | B4005076 | | 3 | 1 | 96906 | MS87006-51 | 4030-00-930-1154 | 5 | 5 |
| 80058 | C-10097/GSC-21 | 7025-01-041-6645 | 1 | 2 | 96906 | MS90725-34 | 5306-00-225-8499 | 1 | 33 |
| 80058 | J-3030/GSG10(V) | 7025-01-080-7693 | 1 | 6 | 96906 | MS90725-34 | 5306-00-225-8499 | 2 | 8 |
| 81349 | MIL-C-3432 | 6145-00-023-6631 | 1 | 4 | 96906 | MS90725-38 | 5306-00-225-8502 | 2 | 12 |
| 81349 | MIL-R-11461 | 5975-00-878-3791 | 1 | 13 | 96906 | MS90725-6 | 5305-00-068-0502 | 1 | 46 |
| 80058 | MK-1783/GSC-21 | 7025-01-042-0325 | 1 | 5 | 96906 | MS90725-65 | 5305-00-269-3215 | 1 | 51 |
| 96906 | MS15795-812 | 5310-00-625-5756 | 1 | 24 | 96906 | MS90726-32 | 5306-00-225-9087 | 1 | 22 |
| 96906 | MS15795-812 | 5310-00-625-5756 | 2 | 3 | 96906 | MS90726-34 | 5306-00-225-9089 | 4 | 9 |
| 96906 | MS15795-812 | 5310-00-625-5756 | 4 | 6 | 96906 | MS90726-38 | 5306-00-225-9093 | 2 | 4 |
| 96906 | MS15795-843 | 5310-00-922-1793 | 4 | 4 | 96906 | MS90726-41 | 5306-00-225-9096 | 2 | 2 |
| 96906 | MS20257P3-312 | 5340-00-269-4045 | 5 | 2 | 96906 | MS90726-64 | 5305-00-269-2807 | 1 | 58 |
| 96906 | MS20392-8093 | | 4 | 8 | 96906 | MS9122-03 | 5305-00-857-5867 | 1 | 54 |
| 96906 | MS20426A4-12 | 5320-00-264-3276 | 5 | 4 | 96906 | MS9318-104 | 5320-01-094-9941 | 6 | 6 |
| 96906 | MS20470A4-18 | 5320-00-234-8559 | 5 | 3 | 80063 | MS9321-06 | 5310-00-983-9732 | 8 | 7 |
| 96906 | MS20470B6-22 | 5320-00-245-4331 | 7 | 8 | 80063 | MS9321-10 | 5310-00-763-3925 | 8 | 14 |
| 96906 | MS20600-MP4W1 | 5320-00-616-5547 | 6 | 3 | 80058 | MT-4391/GSG10 | 5975-01-117-7322 | 2 | 1 |
| 96906 | MS20659-51 | 5940-00-688-6009 | 5 | 9 | 80058 | MT-4392/GSG10 | 5975-01-117-7323 | 2 | 6 |
| 96906 | MS21044N3 | 5310-00-877-5797 | 1 | 40 | 80058 | MT-4393/GSG10 | 5975-01-117-7324 | 2 | 14 |
| 96906 | MS21044N5 | 5310-00-088-0553 | 4 | 6 | 80058 | MT-4394/GSG10 | 5895-01-119-8668 | 2 | 13 |
| 96906 | MS21044N5 | 5310-00-088-0553 | 5 | 11 | 80058 | MT-4395 | | 2 | 10 |
| 96906 | MS21044N6 | 5310-00-950-0039 | 6 | 4 | 80058 | MT-6188G | 5895-01-117-7197 | 2 | 21 |
| 96906 | MS24617-11 | 5305-00-883-0633 | 5 | 7 | 80205 | NAS1031-N8 | 5310-00-688-1998 | 6 | 5 |
| 96906 | MS24637-27 | | 1 | 20 | 80058 | PP-1104/G | 6130-00-635-4900 | 1 | 25 |
| 96906 | MS24665-353 | 5315-00-839-5822 | 4 | 3 | 80063 | PPL-2183 | 5820-00-078-3895 | 1 | 59 |
| 80063 | MS24693-C94 | 5305-00-725-7878 | 8 | 10 | 80063 | PPL-914 | 5820-00-752-5738 | 1 | 60 |
| 96906 | MS24693-316 | | 5 | 6 | 80058 | RO-344/G | 7010-01-044-1677 | 1 | 3 |
| 96906 | MS25036-157 | 5940-00-143-4777 | 1 | 47 | 80063 | RT-524/VRC | 5820-00-892-0622 | 1 | 5 |
| 96906 | MS25083-3886 | 6150-00-583-3516 | 5 | 8 | 80063 | SC-B-414975 | 5820-00-893-1323 | 2 | 20 |
| 96906 | MS25281-F11 | 5340-00-010-4750 | 1 | 14 | 80063 | SC-B-446190 | | 1 | 48 |
| 96906 | MS27130-33 | 5310-00-401-5340 | 1 | 32 | 80063 | SC-B-466190 | | 1 | KIT |
| 96906 | MS27130-33 | 5310-00-401-5340 | 2 | 11 | 80063 | SC-B-690589 | | 4 | 2 |
| 96906 | MS27183-12 | 5310-00-081-4219 | 5 | 10 | 80063 | SC-B-69601 | | 6 | 2 |
| 96906 | MS27183-14 | 5310-00-080-6004 | 6 | 3 | 80063 | SC-B-690642 | | 1 | 10 |
| 96906 | MS27183-8 | 5310-00-809-8546 | 1 | 27 | 80058 | SC-B-866059 | | 1 | 56 |
| 96906 | MS35207-279 | 5305-00-993-2463 | 1 | 44 | 80058 | SC-B-866402 | | 1 | 26 |
| 96906 | MS35229-111 | 5305-00-954-9546 | 1 | 38 | 80063 | SC-B-866404 | | 2 | 7 |
| 96906 | MS35229-112 | | 1 | 12 | 80063 | SC-C-27813,GP1X | 5995-00-192-9614 | 1 | 55 |
| 96906 | MS35240-104 | | 1 | 39 | 80063 | SC-C-279925-GP1 | 5802-00-937-9844 | 1 | 7 |
| 96906 | MS35333-107 | 5310-00-019-0672 | 1 | 37 | 80063 | SC-C-690599 | | 6 | 7 |
| 96906 | MS35333-108 | 5310-00-022-8834 | 1 | 45 | 80063 | SC-C-691280-36 | | 2 | 15 |
| 96906 | MS35333-110 | 5310-00-022-8847 | 1 | 8 | 80063 | SC-C-691284-5 | | 2 | 16 |
| 96906 | MS35335-34 | 5310-00-514-6674 | 2 | 22 | 80063 | SC-C-866422 | | 1 | 17 |
| 80063 | MS35338-136 | 5310-00-929-6395 | 8 | 8 | 80063 | SC-C-866423 | | 1 | 31 |
| 80063 | MS35338-139 | 5310-00-933-8121 | 8 | 13 | 80063 | SC-C-866424 | | 1 | 19 |
| 96906 | MS35338-46 | 5310-00-637-9541 | 1 | 52 | 80063 | SC-C-866425 | | 1 | 18 |
| 96906 | MS35340-43 | 5310-00-721-7809 | 1 | 28 | 80063 | SC-C-866426 | | 1 | 15 |
| 96906 | MS35340-45 | 5310-00-682-5930 | 2 | 5 | 80063 | SC-C-866464 | | 2 | 18 |
| 96906 | MS35340-45 | 5310-00-959-4679 | 1 | 23 | 80063 | SC-C-866479 | | 1 | 34 |
| 96906 | MS35425-28 | 5310-00-543-4717 | 1 | 9 | 80063 | SC-D-16576GP111 | | 8 | 3 |
| 96906 | MS35426-2 | 5310-00-806-1787 | 1 | 35 | 80063 | SC-D-690586 | | 4 | 1 |
| 96906 | MS35649-2385T | 5310-00-410-6457 | 1 | 11 | 80063 | SC-D-690588-1 | | 4 | 7 |
| 80063 | MS35690-410 | 5310-00-903-5966 | 8 | 12 | 80063 | SC-D-690588-2 | | 4 | 10 |
| 96906 | MS45904-60 | 5310-00-080-9786 | 1 | 41 | 80063 | SC-D-690597 | | 7 | 1 |
| 96906 | MS45904-68 | 5310-00-889-2528 | 1 | 43 | 80063 | SC-D-690666 | | 5 | 1 |
| 96906 | MS45904-72 | 5310-00-889-2527 | 1 | 36 | 80063 | SC-D-690676 | | 6 | 1 |
| 96906 | MS45904-76 | 5310-00-061-1258 | 1 | 57 | 80063 | SC-D-691435-3 | | 1 | 16 |
| 96906 | MS51922-13 | 5310-00-984-3807 | 2 | 9 | 80063 | SC-D-691435-6 | | 2 | 17 |
| 80063 | MS51957-28 | 5305-00-054-6652 | 8 | 9 | 80063 | SC-D-866330 | | 1 | 49 |
| 96906 | MS51967-2 | 5310-00-761-6882 | 1 | 42 | 80063 | SC-D-866407 | 5995-01-117-7378 | 1 | 30 |
| 96906 | MS51967-5 | 5310-00-880-7744 | 2 | 19 | 80063 | SC-D-866493 | 5930-01-119-2659 | 1 | 21 |
| 96906 | MS51967-7 | 5310-00-778-2813 | 1 | 53 | | | | | |

NATIONAL STOCK NUMBER AND PART NUMBER INDEX

| FSCM | PART NUMBER | NATIONAL STOCK NUMBER | FIGURE NO | ITEM NO | FSCM | PART NUMBER | NATIONAL STOCK NUMBER | FIGURE NO | ITEM NO |
|-------|-------------|-----------------------|-----------|---------|------|-------------|-----------------------|-----------|---------|
| 80063 | SC-D-866494 | | 8 | 2 | | | | | |
| 80063 | SC-D-866495 | | 8 | 11 | | | | | |
| 80063 | SC-D866499 | 5995-01-117-7291 | 8 | 6 | | | | | |
| 80063 | SC-D-866500 | 5995-01-117-7292 | 8 | 1 | | | | | |
| 80063 | SC-D-866501 | 5995-01-117-7379 | 8 | 4 | | | | | |
| 80063 | SC-D-866502 | 5995-01-117-7293 | 8 | 5 | | | | | |
| 80063 | SM-B-690133 | | 7 | 2 | | | | | |
| 80058 | TSEC/KG-31 | | 1 | 1 | | | | | |

RECOMMENDED CHANGES TO EQUIPMENT TECHNICAL PUBLICATIONS



THEN... JOT DOWN THE DOPE ABOUT IT ON THIS FORM. CAREFULLY TEAR IT OUT. FOLD IT AND DROP IT IN THE MAIL!

SOMETHING WRONG WITH THIS PUBLICATION?

FROM: (PRINT YOUR UNIT'S COMPLETE ADDRESS)

Commander
Stateside Army Depot
ATTN: AMSTA-US
Stateside, N.J. 07703-5007

DATE SENT

10 July 1975

PUBLICATION NUMBER

TM 11-7440-293-24P

PUBLICATION DATE

PUBLICATION TITLE Installation Kit, Electronics
Equipment MK-1818/GSG-10(V)

BE EXACT... PIN-POINT WHERE IT IS

| PAGE NO | PARA-GRAPH | FIGURE NO | TABLE NO |
|---------|------------|-----------|----------|
| 33 | | | |
| 44 | | 19 | |
| 45 | | | |

IN THIS SPACE TELL WHAT IS WRONG AND WHAT SHOULD BE DONE ABOUT IT:

For item 2, change the NSN to read: 5835-00-134-9186.
Reason: Accuracy.

Identify the cover on the junction box (item no. 5).
Reason: It is a separate item and is not called out on figure 19.

Add the cover of the junction box as an item in the listing for figure 19.
Reason: Same as above.

SAMPLE

PRINTED NAME, GRADE OR TITLE, AND TELEPHONE NUMBER

SSG I. M. DeSpirit of 999-1776

SIGN HERE

FILL IN YOUR
UNIT'S ADDRESS

FOLD BACK

DEPARTMENT OF THE ARMY

OFFICIAL BUSINESS
PENALTY FOR PRIVATE USE \$300

POSTAGE AND FEES PAID
DEPARTMENT OF THE ARMY
DOD 314



SAMPLE

Commander
US Army Communications-Electronics Command
and Fort Monmouth
ATTN: AMSEL-ME-MP
Fort Monmouth, New Jersey 07703-5007

TEAR ALONG PERFORATED LINE

RECOMMENDED CHANGES TO EQUIPMENT TECHNICAL PUBLICATIONS



THEN... JOT DOWN THE DOPE ABOUT IT ON THIS FORM. CAREFULLY TEAR IT OUT. FOLD IT AND DROP IT IN THE MAIL!

SOMETHING WRONG WITH THIS PUBLICATION?

FROM: (PRINT YOUR UNIT'S COMPLETE ADDRESS)

DATE SENT

PUBLICATION NUMBER

TM 11-7440-293-24P

PUBLICATION DATE

10 Sept 1985

PUBLICATION TITLE Installation Kit, Electronics Equipment MK-1818/GSG-10(V)

BE EXACT... PIN-POINT WHERE IT IS

PAGE NO

PARA-GRAPH

FIGURE NO

TABLE NO

IN THIS SPACE TELL WHAT IS WRONG AND WHAT SHOULD BE DONE ABOUT IT:

PRINTED NAME, GRADE OR TITLE, AND TELEPHONE NUMBER

SIGN HERE

FILL IN YOUR
UNIT'S ADDRESS

FOLD BACK

DEPARTMENT OF THE ARMY

OFFICIAL BUSINESS
PENALTY FOR PRIVATE USE \$300

POSTAGE AND FEES PAID
DEPARTMENT OF THE ARMY
DOD 314



TEAR ALONG PERFORATED LINE

Commander
US Army Communications-Electronics Command
and Fort Monmouth
ATTN: AMSEL-ME-MP
Fort Monmouth, New Jersey 07703-5007

RECOMMENDED CHANGES TO EQUIPMENT TECHNICAL PUBLICATIONS



THEN... JOT DOWN THE DOPE ABOUT IT ON THIS FORM. CAREFULLY TEAR IT OUT. FOLD IT AND DROP IT IN THE MAIL!

SOMETHING WRONG WITH THIS PUBLICATION?

FROM: (PRINT YOUR UNIT'S COMPLETE ADDRESS)

DATE SENT

PUBLICATION NUMBER

TM 11-7440-293-24P

PUBLICATION DATE

10 Sept 1985

PUBLICATION TITLE Installation Kit, Electronics Equipment MK-1818/GSG-10(V)

BE EXACT... PIN-POINT WHERE IT IS

PAGE NO

PARA-GRAPH

FIGURE NO

TABLE NO

IN THIS SPACE TELL WHAT IS WRONG AND WHAT SHOULD BE DONE ABOUT IT:

PRINTED NAME, GRADE OR TITLE, AND TELEPHONE NUMBER

SIGN HERE

FILL IN YOUR
UNIT'S ADDRESS

FOLD BACK

DEPARTMENT OF THE ARMY

OFFICIAL BUSINESS
PENALTY FOR PRIVATE USE \$300


POSTAGE AND FEES PAID
DEPARTMENT OF THE ARMY
DOD 314



TEAR ALONG PERFORATED LINE

Commander
US Army Communications-Electronics Command
and Fort Monmouth
ATTN: AMSEL-ME-MP
Fort Monmouth, New Jersey 07703-5007

RECOMMENDED CHANGES TO EQUIPMENT TECHNICAL PUBLICATIONS

| | | | |
|--|---|--|------------------|
|  <p style="font-size: 8px;"><i>THEN... JOT DOWN THE DOPE ABOUT IT ON THIS FORM. CAREFULLY TEAR IT OUT. FOLD IT AND DROP IT IN THE MAIL!</i></p> | SOMETHING WRONG WITH THIS PUBLICATION? | | |
| | FROM: (PRINT YOUR UNIT'S COMPLETE ADDRESS) | | |
| DATE SENT | | | |
| PUBLICATION NUMBER TM 11-7440-293-24P | PUBLICATION DATE 10 Sept 1985 | PUBLICATION TITLE Installation Kit, Electronics Equipment MK-1818/GSG-10(V) | |
| BE EXACT... PIN-POINT WHERE IT IS | | | |
| PAGE NO | PARA- GRAPH | FIGURE NO | TABLE NO |
| IN THIS SPACE TELL WHAT IS WRONG AND WHAT SHOULD BE DONE ABOUT IT: | | | |
| PRINTED NAME, GRADE OR TITLE, AND TELEPHONE NUMBER | | | SIGN HERE |

FILL IN YOUR
UNIT'S ADDRESS

FOLD BACK

DEPARTMENT OF THE ARMY

OFFICIAL BUSINESS
PENALTY FOR PRIVATE USE \$300

POSTAGE AND FEES PAID
DEPARTMENT OF THE ARMY
DOD 314



TEAR ALONG PERFORATED LINE

Commander
US Army Communications-Electronics Command
and Fort Monmouth
ATTN: AMSEL-ME-MP
Fort Monmouth, New Jersey 07703-5007

By Order of the Secretary of the Army:

Official:

JOHN A. WICKHAM JR.
General, United States Army
Chief of Staff

DONALD J. DELANDRO
Brigadier General, United States Army
The Adjutant General

Distribution:

To be distributed in accordance with special list.

